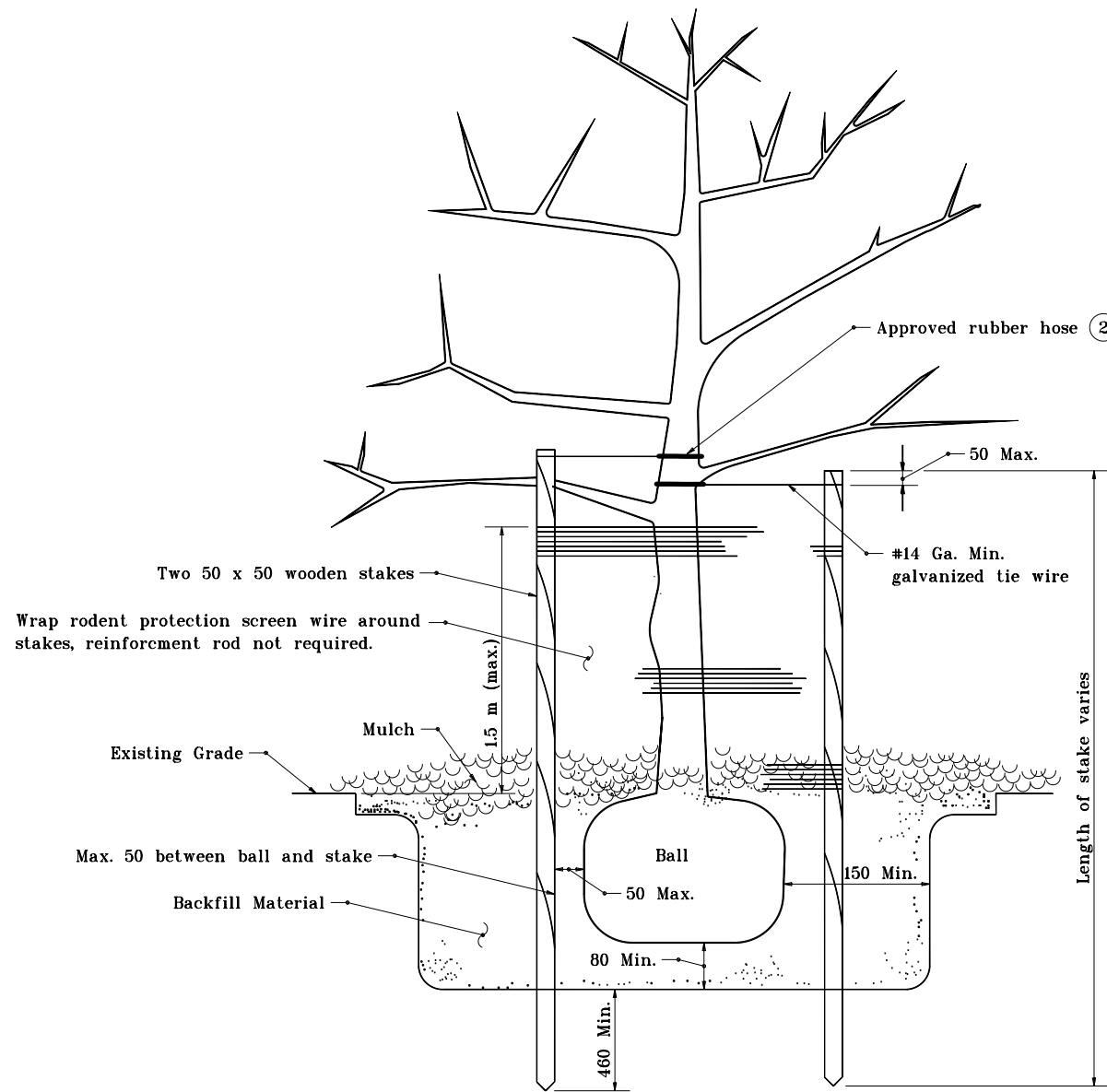


GENERAL NOTES

1. Tie wire securement points on tree shall be above the first or second main branch.
- ② See Standard Drawing 622-LSPL-04 for Rubber Hose Detail.



Detail applies to trees less than 30 caliper.

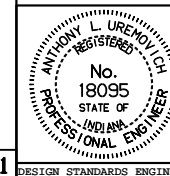
All dimensions are in mm unless otherwise specified.

INDIANA DEPARTMENT OF TRANSPORTATION

PLANTING BALLED AND BURLAPPED TREE

MARCH 1995

STANDARD DRAWING NO. **622-LSPL-01**



/s/ Anthony L. Uremovich 4-03-95
DESIGN STANDARDS ENGINEER DATE

/s/ Donald W. Lucas 4-03-95
CHIEF HIGHWAY ENGINEER DATE

Source Sheet: **LS-1**