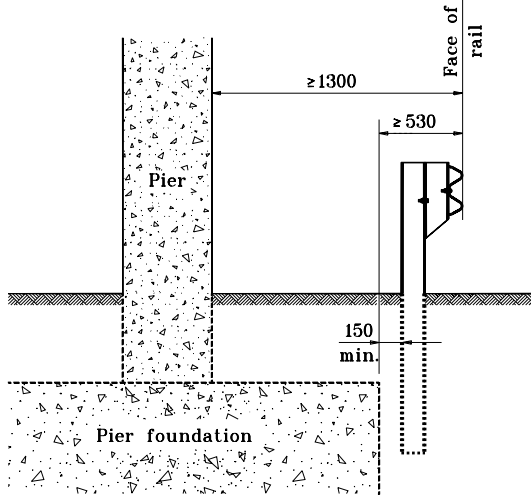


GENERAL NOTES

1. This sheet shall be used when W-beam guardrail is specified along a two-lane two-way roadway to shield the piers of overhead structures.
2. The required length of guardrail shall be determined in accordance with Tables P-1-1 and P-1-2, and shall be as shown on the plans.

Dimensions and details not shown on this sheet shall be as shown on the plans.



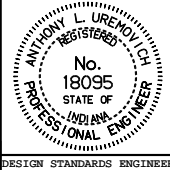
Guardrail to Pier Clearance

TABLE P-1-1			
Outside (Right Side) Shoulder Pier Approach Guardrail Lengths at Piers/Frame Bents ≤ 4.9 m from Pavement Edge			
Design Speed (km/h)	Pier End Inside Clear Zone	Pier End Outside Clear Zone	Guardrail Pay Length (meters)
	Required Minimum Length (meters) in Advance of the Pier/Frame Bent End		
≥ 80	> of the rounded calculated length of need or 30	30	Required minimum length
< 80	> of the rounded calculated length of need or 15	15	minus 7.62 for GP transition

TABLE P-1-2			
Outside (Right Side) Shoulder Pier Approach Guardrail Lengths at Piers/Frame Bents > 4.9 m from Pavement Edge			
Design Speed (km/h)	Pier End Inside Clear Zone	Pier End Outside Clear Zone	Guardrail Pay Length (meters)
	Required Minimum Length (meters) in Advance of the Pier/Frame Bent End		
≥ 80	> of the rounded calculated length of need or 30	30	Required minimum length
< 80	> of the rounded calculated length of need or 15	15	plus length to shield pier face

All dimensions are in mm unless otherwise specified.

INDIANA DEPARTMENT OF TRANSPORTATION
ROADSIDE PIER PROTECTION GUARDRAIL
 SEPTEMBER 1997
 STANDARD DRAWING NO. **601-RPPG-06**



/s/ Anthony L. Uremovich 9-01-97
 DESIGN STANDARDS ENGINEER DATE

/s/ Donald W. Lucas 9-01-97
 CHIEF HIGHWAY ENGINEER DATE