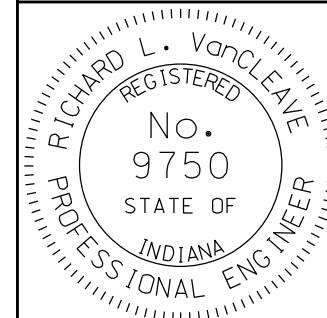


**LEGEND:**

- 1 75 kg/m<sup>2</sup> HMA Surface Type A, on  
120 kg/m<sup>2</sup> HMA Intermediate, Type A
- 2 150 mm Compacted Aggregate No.53, Base
- 5 Width and Cross Slope as required
- 6 Subgrade Treatment (75 mm subgrade excavated  
and replaced with 75 mm Coarse Aggregate No.53)
- 7 Variable-depth Compacted Aggregate No.53 or No.73

INDIANA DEPARTMENT OF TRANSPORTATION  
HMA NONMOTORIZED-VEHICLE-USE FACILITY  
PAVEMENT SECTION  
ON ABANDONED-RAILROAD CORRIDOR  
SEPTEMBER 2010

STANDARD DRAWING NO. 402-NVUF-02



DESIGN STANDARDS ENGINEER

<i>/s/ Richard L. VanCleave</i>	09/01/10
DESIGN STANDARDS ENGINEER	DATE
<i>/s/ Mark A. Miller</i>	09/01/10
CHIEF HIGHWAY ENGINEER	DATE