

PERFORATED FUSE PLATE DATA TABLE

Post Size	BOLT SIZE	Wt. of Plate* (One Post), lb	F	G	J	K	L	M	d <sub>1</sub>	d <sub>2</sub>	t <sub>3</sub>	Bolt Tension, lbs
W6 x 9	1/2" x 1 1/2"	1.01	4 1/4"	2"	4"	2 1/4"	7/8"	1"	9/16"	3/4"	1/4"	12000
W8 x 10	1/2" x 1 1/2"	1.01	4 1/4"	2"	4"	2 1/4"	7/8"	1"	9/16"	3/4"	1/4"	12000
W8 x 13	1/2" x 1 1/2"	1.01	4 1/4"	2"	4"	2 1/4"	7/8"	1"	9/16"	3/4"	1/4"	12000
W8 x 15	5/8" x 2 1/4"	1.72	5"	2 1/2"	4"	2 1/4"	7/8"	1"	11/16"	3/4"	3/8"	19000
W8 x 18	5/8" x 2 1/4"	2.27	5"	2 1/2"	5 1/4"	2 3/4"	1 1/4"	1 1/4"	11/16"	1 1/16"	3/8"	19000
W10 x 19	5/8" x 2 1/4"	1.72	5"	2 1/2"	4"	2 1/4"	7/8"	1"	11/16"	3/4"	3/8"	19000

\* Gross weight with holes deducted from weight. Incidental weights of bolts and washers are not included in plan quantities.

**NOTES:**

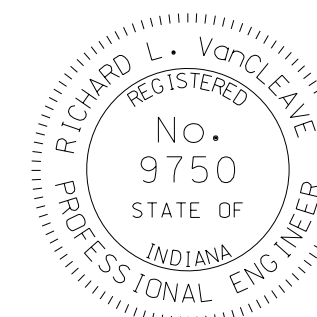
1. See Standard Drawing E 802-SNGP-01 through 07 for details and notes for posts, bolts, washers, etc.

INDIANA DEPARTMENT OF TRANSPORTATION

SIGN DATA TABLES

SEPTEMBER 2008

STANDARD DRAWING NO. E 802- SNGP-06



DESIGN STANDARDS ENGINEER

*/s/ Richard L. VanCleave*      09/02/08  
DESIGN STANDARDS ENGINEER      DATE

*/s/ Mark A. Miller*      09/02/08  
CHIEF HIGHWAY ENGINEER      DATE