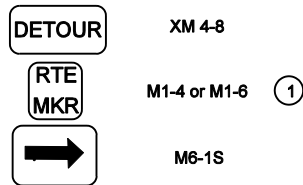
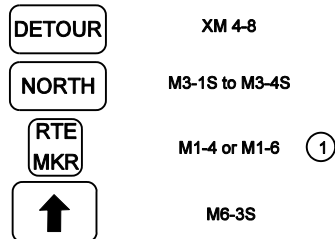


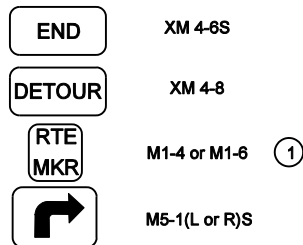
**(A) ADVANCE TURN DETOUR
ROUTE MARKER ASSEMBLY**



**(B) DIRECTIONAL DETOUR ROUTE
MARKER ASSEMBLY**



**(C) CONFIRMING DETOUR ROUTE
MARKER ASSEMBLY**



**(D) END DETOUR ROUTE
MARKER ASSEMBLY**

GENERAL NOTES

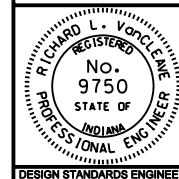
- ① For an un-numbered route, a street name sign or county road name or number sign shall be used in lieu of the route marker in detour route marker assembly.
- (A) Advance turn detour route marker assemblies shall be located as shown, or after the last cross street prior to the beginning of the detour, as directed.
- (B) Directional detour route marker assemblies shall be located 100 ft to 200 ft in advance of all required turns within the detour limits.
- (C) Confirming detour route marker assemblies shall be located 200 ft past all major intersections, as directed, and shall be spaced a maximum of 3 mi on a rural detour or 0.5 mi on an urban detour on each leg of such detours. Confirming detour route marker assemblies shall be placed after a required turn when directed.
- (D) End detour route marker assemblies shall be located at the point at which traffic is returned to the original route. The advance turn marker (M5-1) shall be included in the assembly when traffic is required to turn to access the original route.

INDIANA DEPARTMENT OF TRANSPORTATION

**DETOUR ROUTE
MARKER ASSEMBLIES**

MARCH 2003

STANDARD DRAWING NO. E 801-TCDD-03



/s/ Richard L. VanCleave 3-03-03
DESIGN STANDARDS ENGINEER DATE

/s/ Richard K. Smutzer 3-03-03
CHIEF HIGHWAY ENGINEER DATE

DESIGN STANDARDS ENGINEER