

*To be determined in the field

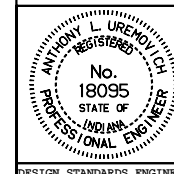
BRIDGE SEAL	A	B	C	D	E
BS2	1"	*	0	1/2"	1/2" (+1/2", -0")
BS6	1 5/8"	*	7/8" ±	3/8"	1/2" (+1/4", -0")
BS8	2"	*	1 1/4" ±	3/8"	1/2" (+1/4", -0")
BS9	2 5/8"	*	1 5/8" ±	1/2"	3/4" (+1/4", -0")
BS11	3 1/8"	*	2 1/8" ±	1/2"	3/4" (+1/4", -0")

INDIANA DEPARTMENT OF TRANSPORTATION

**TYPE BS
EXPANSION JOINT**

JANUARY 1995

STANDARD DRAWING NO. **E 724-BJTS-02**



DETAILS PLACED IN THIS FORMAT 11-15-99

/s/ Anthony L. Uremovich 11-15-99
DESIGN STANDARDS ENGINEER DATE

/s/ Firooz Zandi 11-15-99
CHIEF HIGHWAY ENGINEER DATE

DESIGN STANDARDS ENGINEER

ORIGINALLY APPROVED 1-03-95