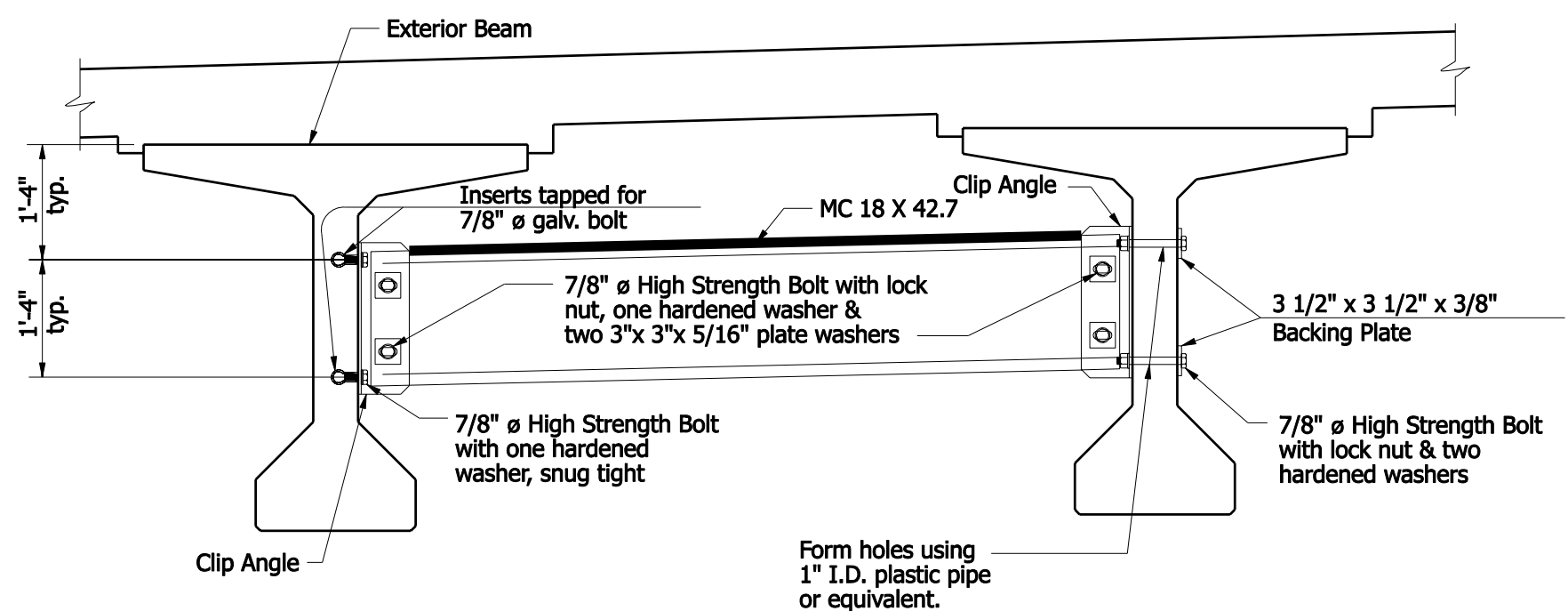


INTERMEDIATE DIAPHRAGM
Typical for Square Structure



INTERMEDIATE DIAPHRAGM
Typical for Skewed Structure

NOTES:

1. See Standard Drawing E 707-SDPC-04 for connection details.

INDIANA DEPARTMENT OF TRANSPORTATION	
STEEL DIAPHRAGMS INDIANA BULB-TEES, 54-IN. DEPTH	
SEPTEMBER 2007	
STANDARD DRAWING NO. E 707-SDPC-03	
	<p><i>/s/ Richard L. VanCleave</i> 09/04/07 DESIGN STANDARDS ENGINEER DATE</p> <p><i>/s/ Mark A. Miller</i> 09/04/07 CHIEF HIGHWAY ENGINEER DATE</p>
DESIGN STANDARDS ENGINEER	