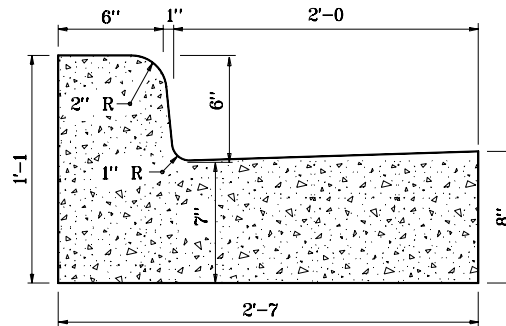
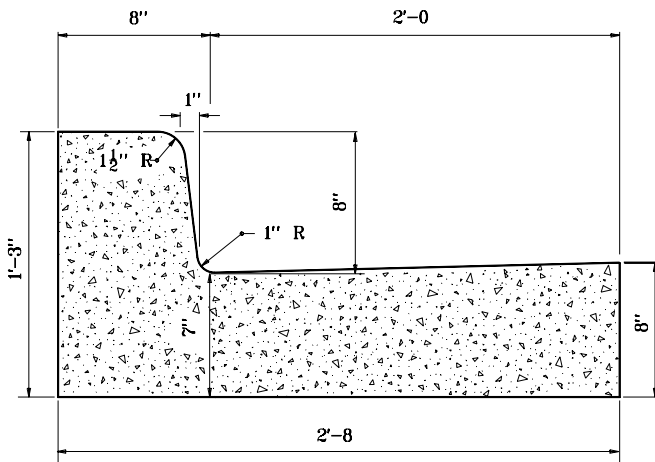


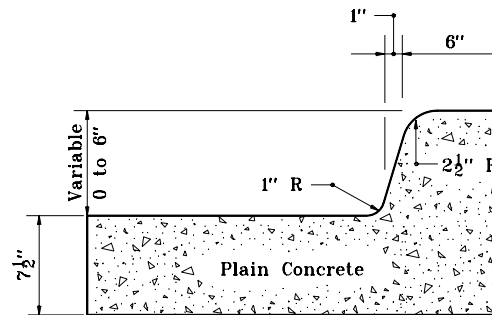
**COMBINED CONCRETE CURB  
AND GUTTER, TYPE B  
(MOUNTABLE)**



**COMBINED CONCRETE CURB  
AND GUTTER  
(BARRIER)**



**COMBINED CONCRETE CURB  
AND GUTTER, TYPE C  
(BARRIER)**



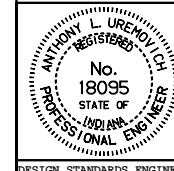
**MONOLITHIC CURB**

INDIANA DEPARTMENT OF TRANSPORTATION

**COMBINED CONCRETE CURB  
AND GUTTER**

SEPTEMBER 1999

STANDARD DRAWING NO. E 605-CCCG-01



DETAILS PLACED IN THIS FORMAT 11-15-99

/s/ Anthony L. Uremovich 11-15-99  
DESIGN STANDARDS ENGINEER DATE

/s/ Firooz Zandi 11-15-99  
CHIEF HIGHWAY ENGINEER DATE

DESIGN STANDARDS ENGINEER

ORIGINALLY APPROVED 9-01-99