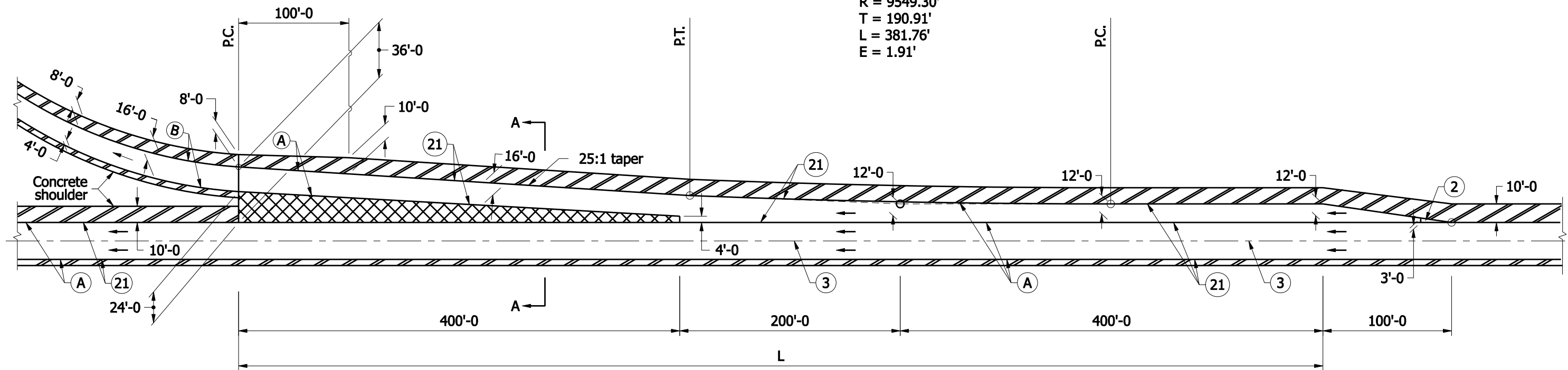


GENERAL NOTES

- ① Pavement contraction joints shall be extended through the concrete shoulder in the gore areas.
- ② Shoulder corrugations shall be omitted in this area.
3. See tables on Standard Drawing E 401-REBS-04.
4. See Standard Drawing E 501-RECS-03 for Section A-A.

CURVE DATA

$\Delta = 2^\circ 17' 26''$
 $R = 9549.30'$
 $T = 190.91'$
 $L = 381.76'$
 $E = 1.91'$



LEGEND

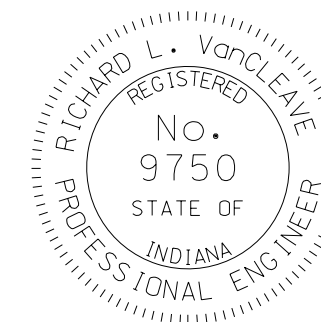
- Ⓐ Pavement type and thickness as specified for the mainline.
- Ⓑ Pavement type and thickness as specified for ramps.
- ③ Longitudinal joint
- ②① Longitudinal construction joint
- ▨ Concrete shoulder (Thickness of mainline pavement)
- ▩ Concrete shoulder (Thickness as specified on Typical Sections)

INDIANA DEPARTMENT OF TRANSPORTATION

RAMP EXIT TERMINAL
 CONCRETE SHOULDER

SEPTEMBER 2008

STANDARD DRAWING NO. E 501- RECS-02



DESIGN STANDARDS ENGINEER

/s/ Richard L. VanCleave 09/02/08
 DESIGN STANDARDS ENGINEER DATE

/s/ Mark A. Miller 09/02/08
 CHIEF HIGHWAY ENGINEER DATE