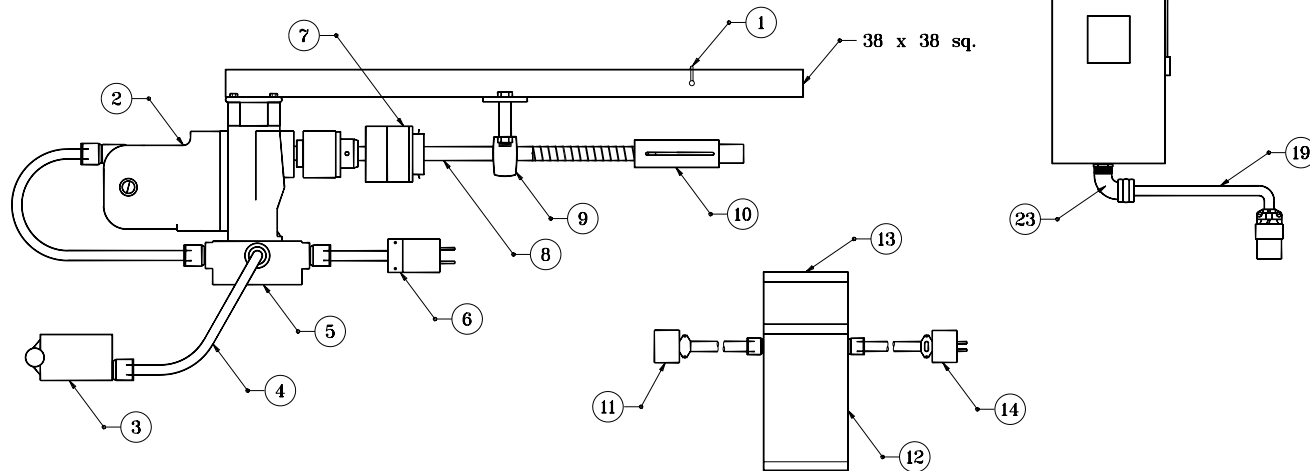
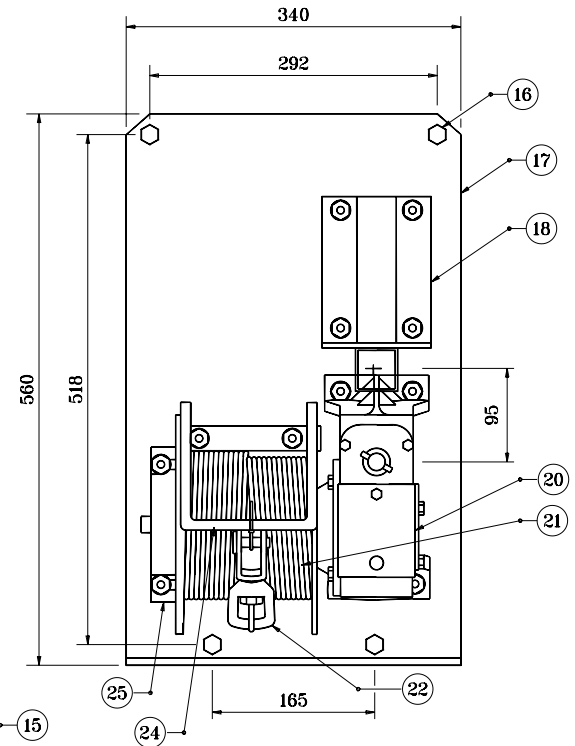


ITEM DESCRIPTIONS

- ① Hitch pin
- ② 19 dia. reversible electric motor 120 V, 11.5 A, 350 RPM
- ③ Reversing drum switch
- ④ Control cord, 6 m length
- ⑤ Wiring housing
- ⑥ Plug to mate to connector in pole base or transformer secondary
- ⑦ Torque limiter coupling
- ⑧ 19 dia. steel shaft
- ⑨ Ballbearing pillowblock
- ⑩ 16 hex socket crank shaft coupling
- ⑪ Connector to motor from 120 V transformer secondary
- ⑫ Stepdown transformer 120 V secondary, 1.5 kVA for 240 V, 277 V, & 480 V; 2.0 kVA for 208 V
- ⑬ 13 mm carry handle
- ⑭ Plug to connector in pole base from transformer primary
- ⑮ NEMA 4-circuit-breaker enclosure field mounted to pole handhole door
- ⑯ 13 dia. mounting bolt, 4 req'd.
- ⑰ 6 thick steel winch plate zinc electroplate finish
- ⑱ Power unit mounting bracket, 6 thick steel zinc electroplate finish
- ⑲ 1.5 m power supply cord and connector
- ⑳ Winch 30:1 gear ratio internal drag brake
- ㉑ 8 dia. 7 x 19 wire rope. Length is pole height + 1.8 m stainless steel
- ㉒ Forged steel swivel, 76 kPa ultimate strength
- ㉓ Cord grip
- ㉔ Winch cable guard
- ㉕ Winch outboard support



All dimensions are in mm unless otherwise specified.

INDIANA DEPARTMENT OF TRANSPORTATION
HIGHWAY ILLUMINATION TOWER
DETAILS - BOTTOM LATCH
 MAY98 FOR JAN99

STANDARD DRAWING NO. 807-LTHI-03A

	/s/ Anthony L. Uremovich 1-04-99 <small>DESIGN STANDARDS ENGINEER DATE</small>
	/s/ Donald W. Lucas 1-04-99 <small>CHIEF HIGHWAY ENGINEER DATE</small>

Source Sheet: NONE