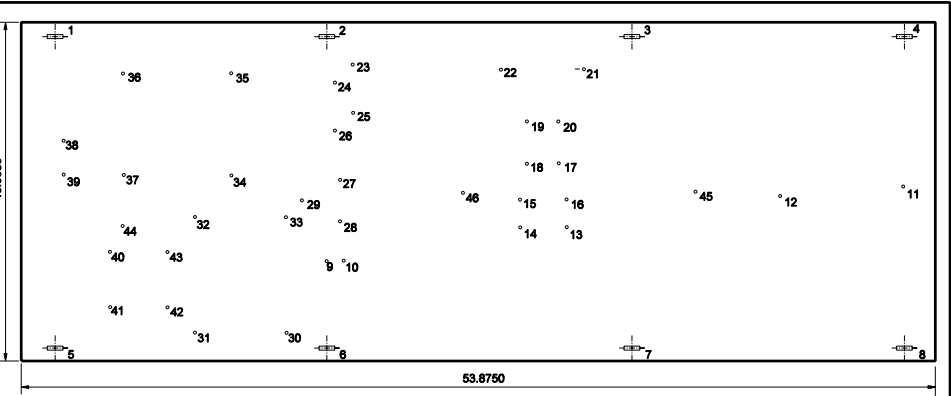


**DETECTOR CARD DIN RAIL DETAIL**

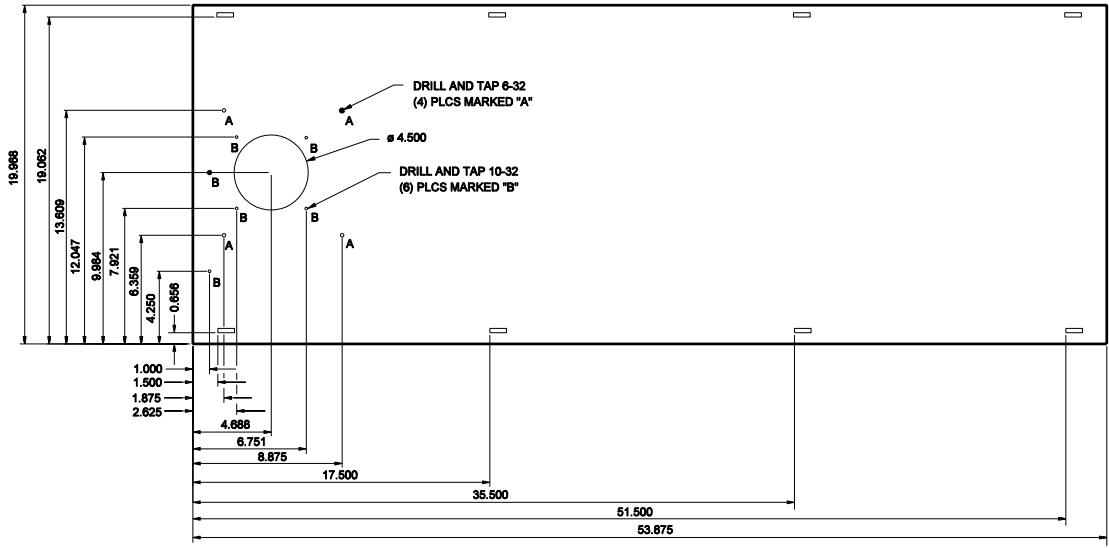


**POWER DISTRIBUTION PANEL PUNCH OUT DETAIL**

X  
Y  
COORDINATES

No	X	Y	SIZE
1	2.000	19.187	0.25 x 1.00 SLOT
2	18.000		
3	36.000		
4	52.000	19.187	
5	2.000	0.781	
6	18.000		
7	36.000		
8	52.000	0.781	0.25 x 1.00 SLOT
9	18.000	6.000	0.125 DIA
10	18.000	6.000	0.125 DIA
11	52.000	10.234	8-32 NC-2
12	44.888	9.734	
13	32.180	7.950	
14	29.430	7.950	
15	29.430	9.800	
16	32.180	9.800	
17	31.740	11.708	
18	29.870	11.708	
19	29.870	14.175	
20	31.740	14.175	
21	33.250	17.234	
22	28.375	17.234	8-32 NC-2

No	X	Y	SIZE
23	19.585	17.540	10-32 NC-2
24	18.522	16.478	
25	19.585	14.728	
26	18.522	13.865	
27	18.803	10.736	
28	18.803	8.336	
29	16.553	9.536	
30	15.608	1.750	
31	10.250	1.750	
32	10.250	8.550	
33	15.608	8.550	
34	12.428	11.000	
35	12.428	17.000	
36	6.053	17.000	
37	6.053	11.000	
38	2.500	13.000	
39	2.500	11.000	
40	5.250	6.500	
41	5.250	3.250	
42	8.625	3.250	
43	8.625	6.500	
44	6.000	8.000	10-32 NC-2
45	39.750	10.000	8-32 NC-2
46	28.000	10.000	8-32 NC-2



**HEATER PANEL PUNCH OUT DETAILS**

**NOTES:**

- See Standard Drawings E 809-ITCS-01 thru -02 or -03 thru -07 for additional ITS cabinet details.

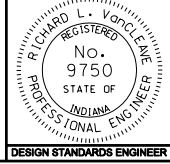
All dimensions are in inches

INDIANA DEPARTMENT OF TRANSPORTATION

**CABINET PUNCH OUT DETAILS**

MARCH 2006

STANDARD DRAWING NO. E 809-ITSC-03



/s/ Richard L. VanCleave 3-01-06  
DESIGN STANDARDS ENGINEER DATE

/s/ Richard K. Smutzer 3-01-06  
CHIEF HIGHWAY ENGINEER DATE

DESIGN STANDARDS ENGINEER