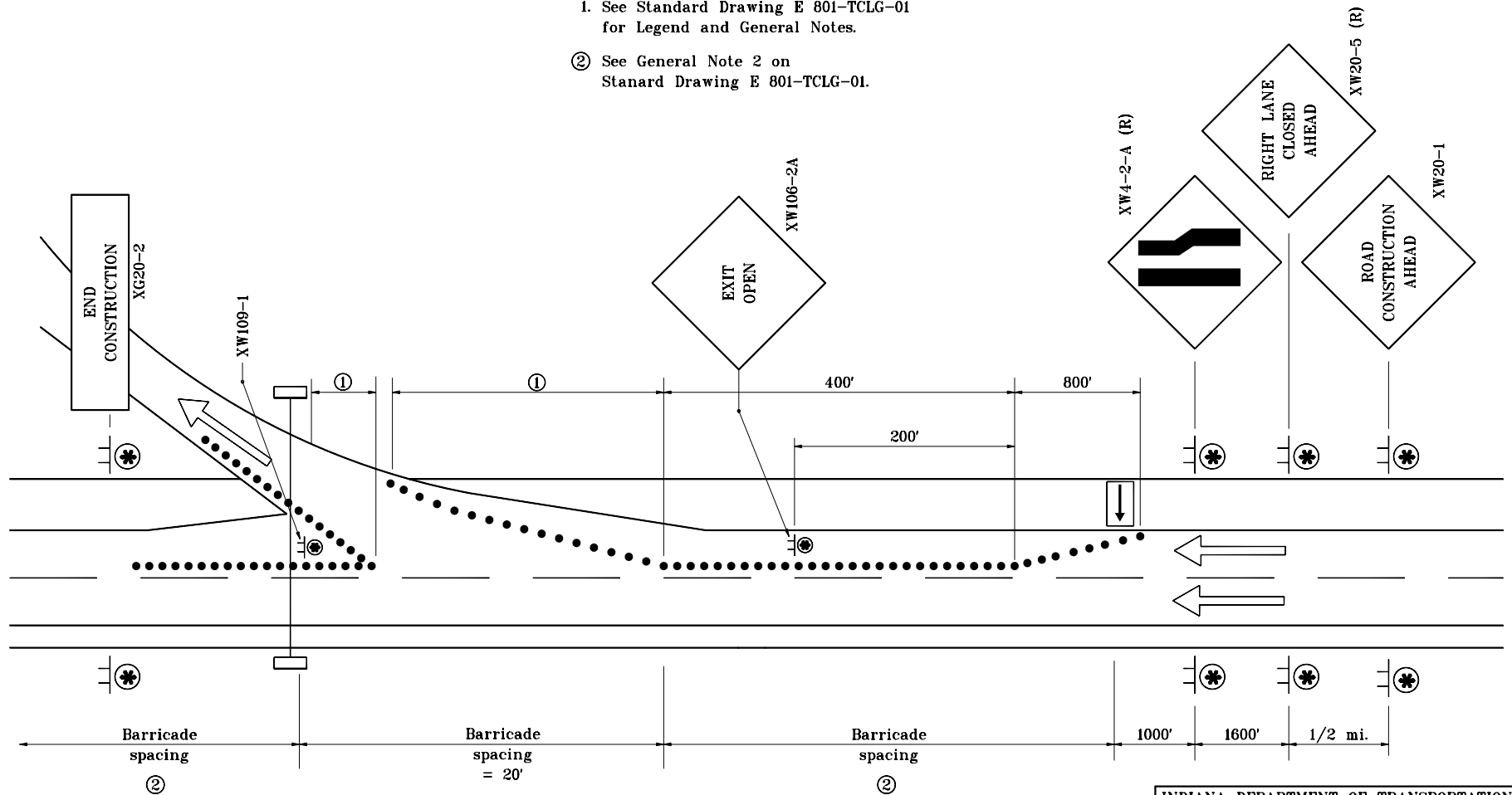


GENERAL NOTES

1. See Standard Drawing E 801-TCLG-01 for Legend and General Notes.
- ② See General Note 2 on Stanard Drawing E 801-TCLG-01.



MULTI-LANE DIVIDED HIGHWAY

INDIANA DEPARTMENT OF TRANSPORTATION	
TRAFFIC CONTROL FOR OVERHEAD SIGN INSTALLATION	
MAY 1998	
STANDARD DRAWING NO. E 801-TCLC-15	
DETAILS PLACED IN THIS FORMAT 11-15-99	
	/s/ Anthony L. Uremovich 11-15-99 DESIGN STANDARDS ENGINEER DATE
	/s/ Firooz Zandi 11-15-99 CHIEF HIGHWAY ENGINEER DATE
	ORIGINALLY APPROVED 5-01-98