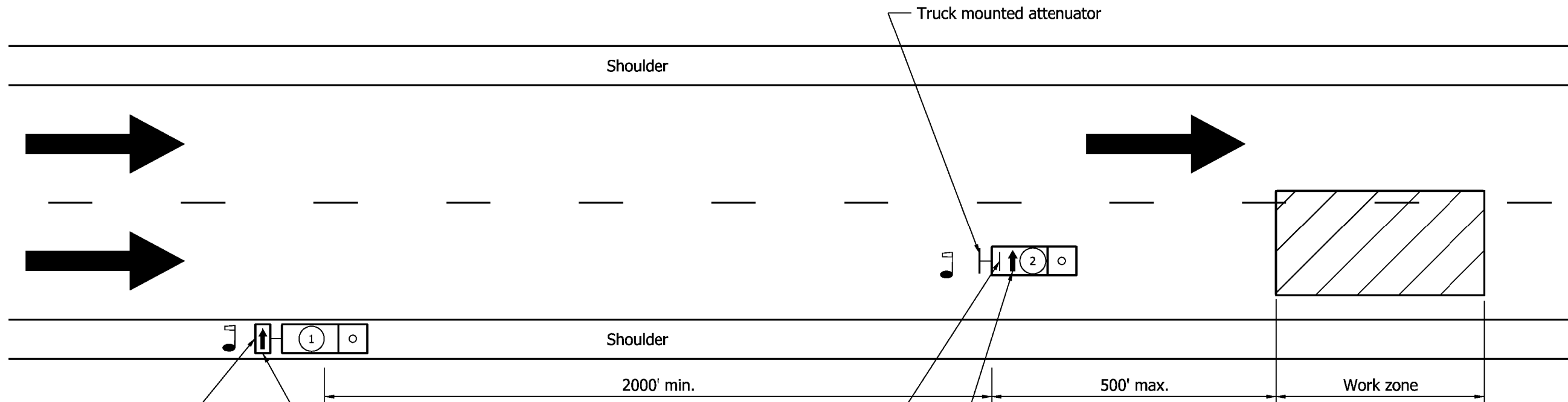
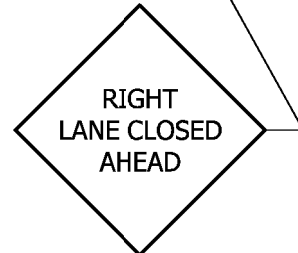


MULTI-LANE DIVIDED HIGHWAY



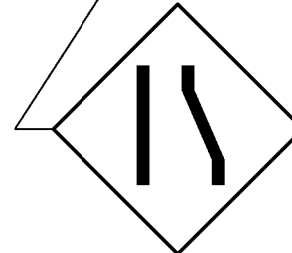
Truck mounted flashing arrow sign



XW20-5
(R or L)
Mounted to bottom
of flashing arrow sign

LEGEND

- Flagger
- Truck which may be a pick-up
- Truck which shall be 24,000 lb or greater gross vehicular weight



XWA-2
(R or L)
Mounted on rear
of truck

2'-6 x 4'-0 roof mounted flashing arrow sign

GENERAL NOTES

1. Flagger shall be used while trucks are stopped.
2. Strobe lights will be require on all vehicles.
3. Distances shown are approximate and may be adjusted as directed.
4. Truck mounted attenuator shall be designed to attenuator impacts by a pickup truck of 4400 lbs. gross vehicular weight at 60 mph.

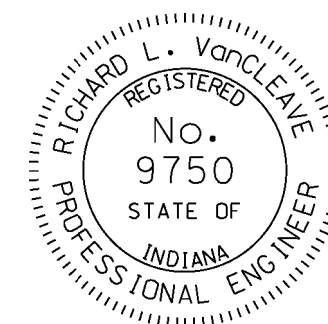
LONGITUDINAL BUFFER LENGTH SHOWN ON STANDARD DRAWING E 801-TCFO-01

Posted Speed Limit, mph	Length, ft
30 or lower	80
35	115
40	180
45	230
50	280
55	350
60	410
65	500

INDIANA DEPARTMENT OF TRANSPORTATION
MAINTENANCE OF TRAFFIC FOR
REFLECTOR REPLACEMENT

SEPTEMBER 2009

STANDARD DRAWING NO. E 801-TCFO-03



DESIGN STANDARDS ENGINEER

/s/ Richard L. VanCleave 09/01/09
DESIGN STANDARDS ENGINEER DATE

/s/ Mark A. Miller 09/01/09
CHIEF HIGHWAY ENGINEER DATE