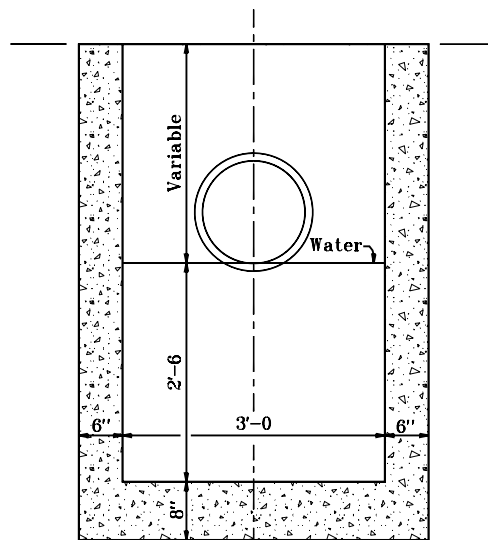


SECTION A-A



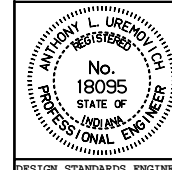
SECTION B-B

INDIANA DEPARTMENT OF TRANSPORTATION

**CATCH BASIN
TYPE K**

APRIL 1995

STANDARD DRAWING NO. **E 720-CBST-05**



DETAILS PLACED IN THIS FORMAT 11-15-99

/s/ Anthony L. Uremovich 11-15-99
DESIGN STANDARDS ENGINEER DATE

/s/ Firooz Zandi 11-15-99
CHIEF HIGHWAY ENGINEER DATE

DESIGN STANDARDS ENGINEER

ORIGINALLY APPROVED 4-03-95