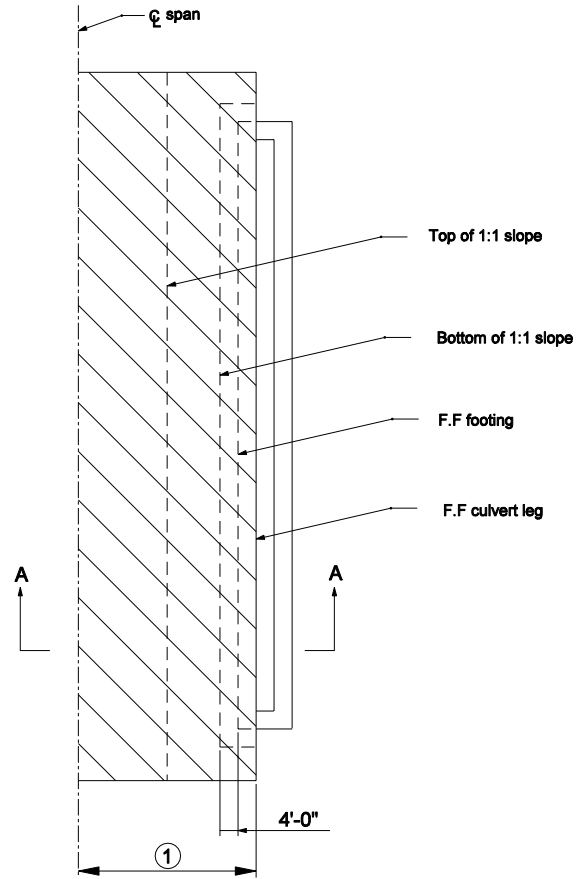


PLAN - WITH WINGWALLS



PLAN - PROJECTING

NOTES:

- ① Half of span width.
2. Crosshatched area indicates riprap limits.
3. See Standard Drawing E 714-CCSP-02 for Section A-A, for span length of 20'-0" or greater. See Standard Drawing E 714-CCSP-03 for Section A-A for span length from 10'-0" to less than 20'-0".

RIPRAP METHOD

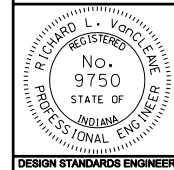
F.F. = Front face

INDIANA DEPARTMENT OF TRANSPORTATION

**THREE-SIDED CONCRETE CULVERT
SCOUR PROTECTION**

MARCH 2004

STANDARD DRAWING NO. E 714-CCSP-01



/s/ Richard L. VanCleave 3/01/04
DESIGN STANDARDS ENGINEER DATE

/s/ Richard K. Smutzer 3/01/04
CHIEF HIGHWAY ENGINEER DATE

DESIGN STANDARDS ENGINEER