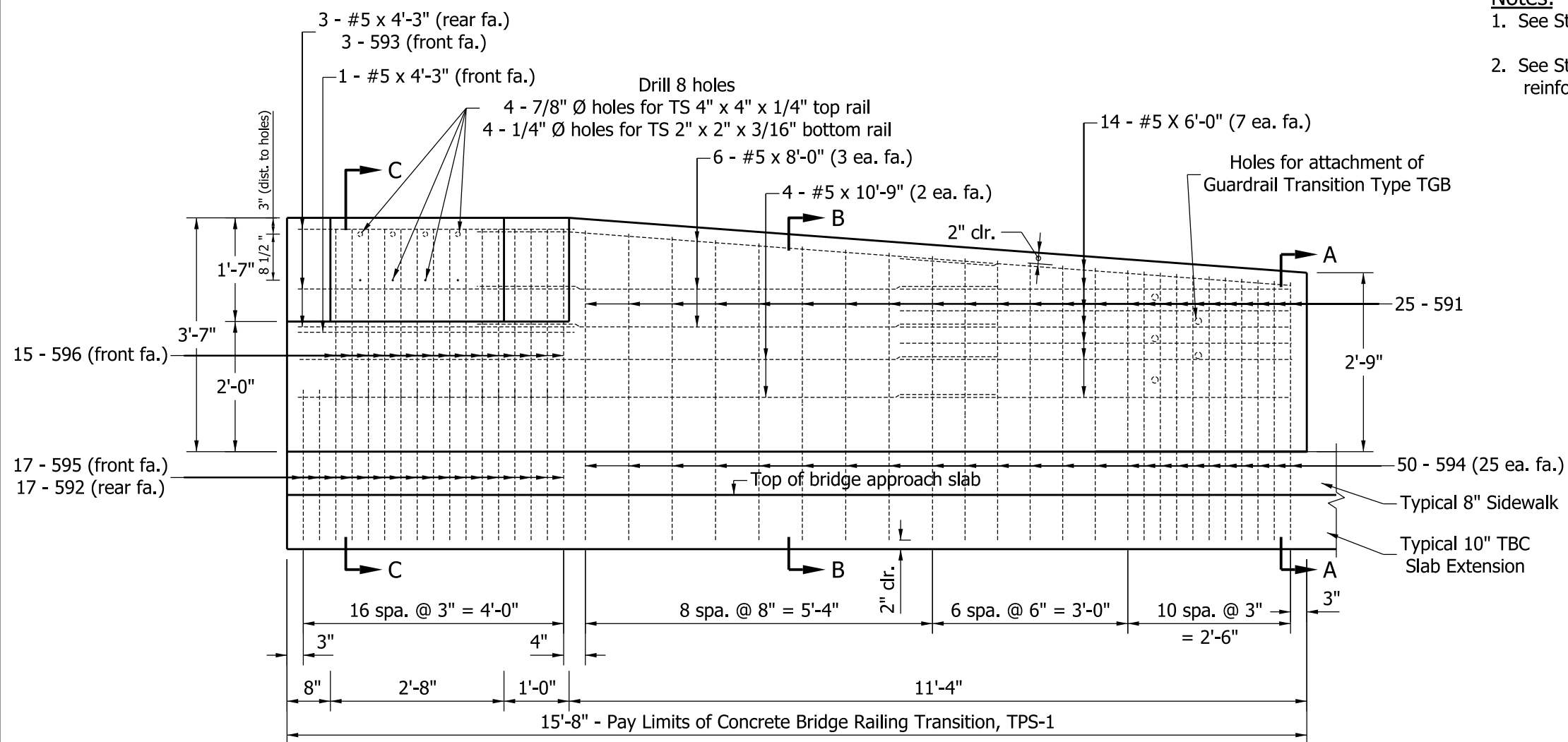
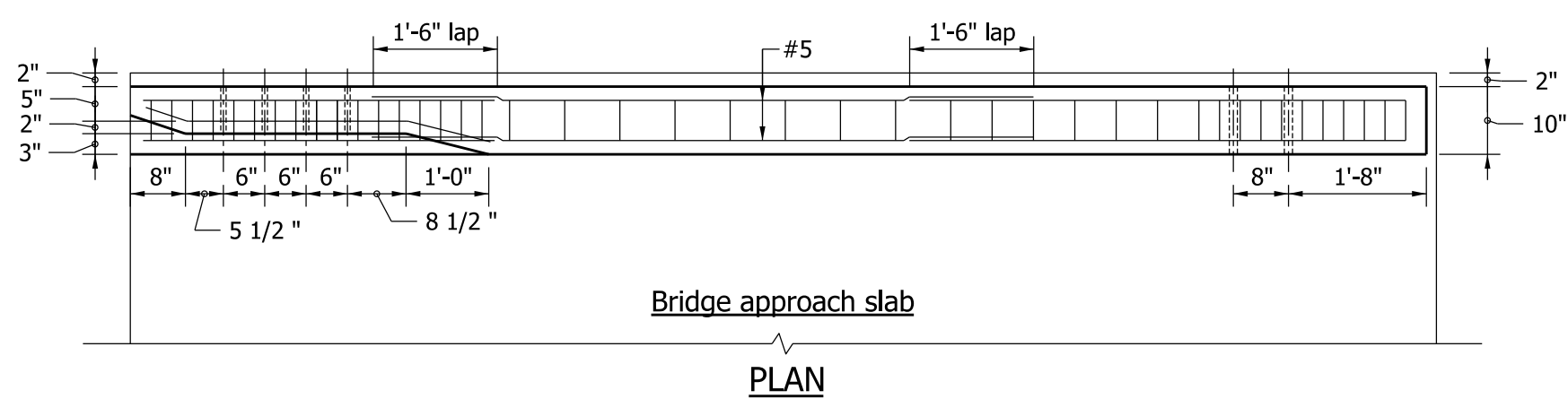


Notes:

1. See Standard Drawing E 706-TTBP-09 for general notes.
2. See Standard Drawing E 706-TTBP-06 for sections and reinforcing-bar diagrams.



BILL OF MATERIALS, TPS-1 EPOXY-COATED REINFORCING STEEL			
Mark / Size	No. of Bars	Total Length	Weight
591 x 5'-4"	25	133'-4"	
592 x 5'-4"	17	90'-8"	
593 x 4'-3"	3	12'-9"	
594 x 4'-3"	50	212'-6"	
595 x 3'-9"	17	63'-9"	
596 x 3'-0"	15	45'-0"	
#5 x 10'-9"	4	43'-0"	
#5 x 8'-0"	6	48'-0"	
#5 x 6'-0"	14	84'-0"	
#5 x 4'-3"	4	17'-0"	
Total Epoxy-Coated Reinforcing Steel		750'-0"	783 lb
MISCELLANEOUS			
Concrete, Class C			1.5 cys
Surface Seal			121 sft



INDIANA DEPARTMENT OF TRANSPORTATION

CONCRETE BRIDGE RAILING TRANSITION, TPS-1

SEPTEMBER 2009

STANDARD DRAWING NO. E 706-TTBP-05

DESIGN STANDARDS ENGINEER

/s/ *Richard L. VanCleave* 09/01/09
DESIGN STANDARDS ENGINEER DATE

/s/ *Mark A. Miller* 09/01/09
CHIEF HIGHWAY ENGINEER DATE