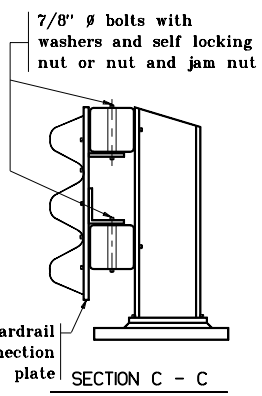


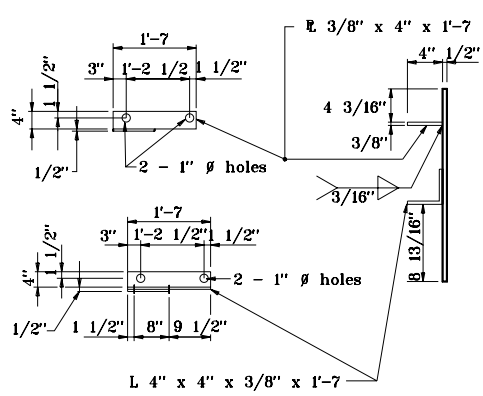
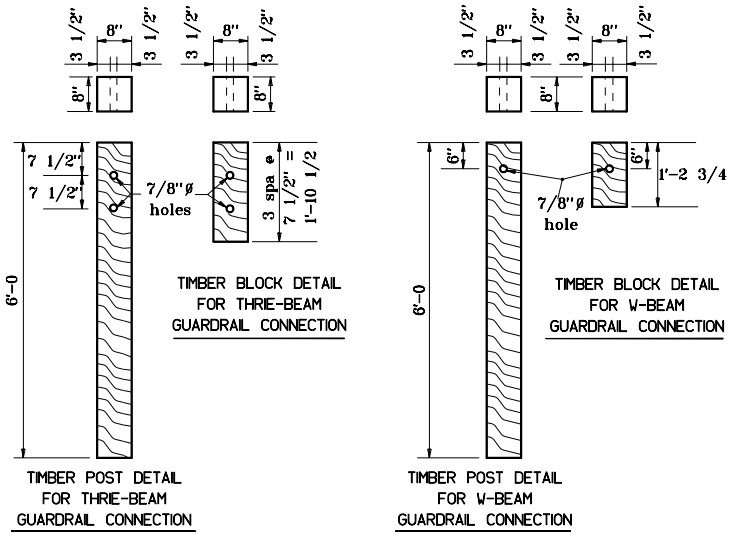
ELEVATION - TRANSITION CONNECTION



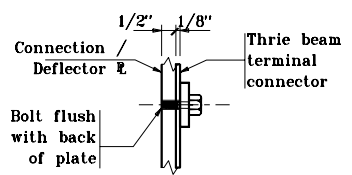
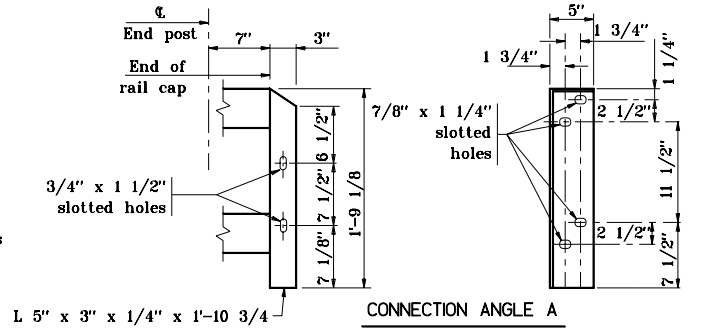
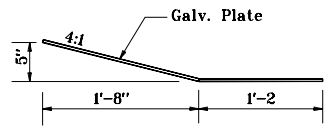
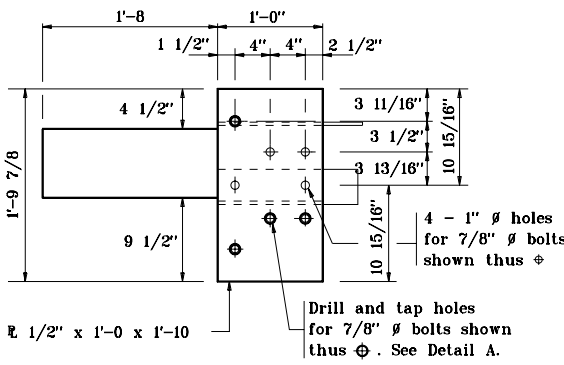
SECTION C - C

NOTES:

1. See Standard Drawing E 706-TUTM-03 for railing tubing cap details.



GUARDRAIL CONNECTION / DEFLECTOR PLATE DETAILS



DETAIL A

INDIANA DEPARTMENT OF TRANSPORTATION	
GUARDRAIL TRANSITION, TGT	
MAY 2000	
STANDARD DRAWING NO. E 601-TTGT-02	
	/s/ Anthony L. Uremovich 5-01-00 DESIGN STANDARDS ENGINEER DATE
	/s/ Firooz Zandi 5-01-00 CHIEF HIGHWAY ENGINEER DATE
DESIGN STANDARDS ENGINEER	