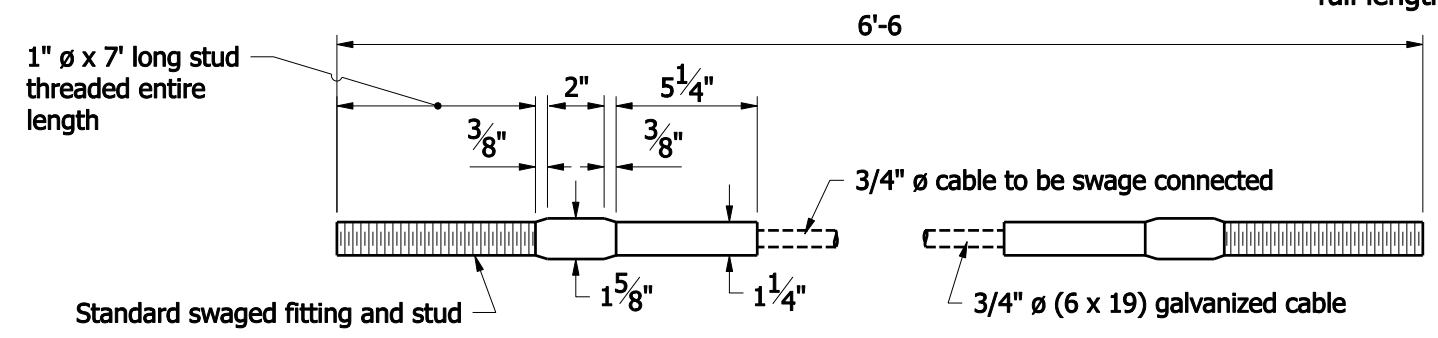


GENERAL NOTES

1. This sheet shall be used with Standard Drawings E 601-CWGS-01, 02, 03, and 06.
2. Only one 5/8" ϕ dia. x 10" bolt with nut and washer is required curved W-beamper steel tube and post.
3. Plate washers shall be used only where indicated.

TYPE 5 ANCHOR



ANCHOR CABLE ASSEMBLY

INDIANA DEPARTMENT OF TRANSPORTATION	
CURVED W-BEAM GUARDRAIL SYSTEM	
SEPTEMBER 2008	
STANDARD DRAWING NO. E 601-CWGS-04	
	/s/ <i>Richard L. VanCleave</i> 09/02/08 DESIGN STANDARDS ENGINEER DATE
	/s/ <i>Mark A. Miller</i> 09/02/08 CHIEF HIGHWAY ENGINEER DATE
DESIGN STANDARDS ENGINEER	