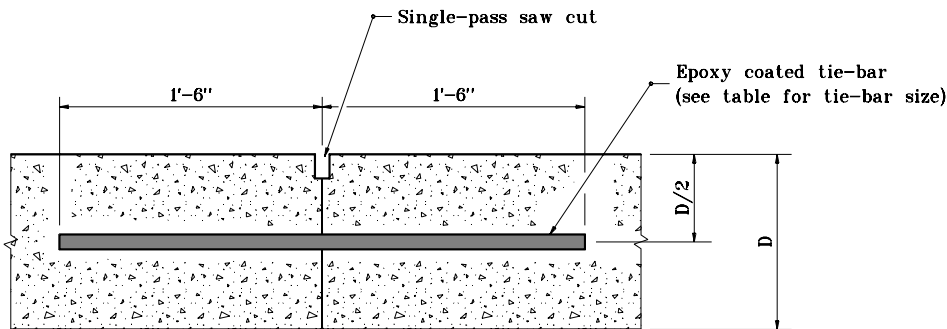
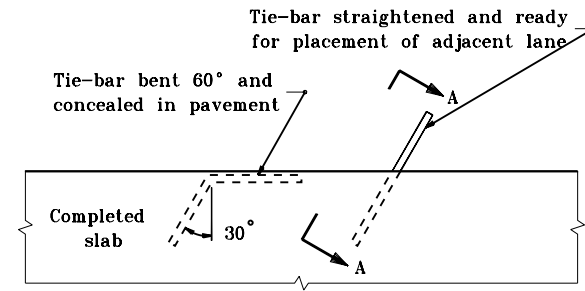


TIE-BAR SIZES FOR LONGITUDINAL CONSTRUCTION JOINT

Pavement Thickness, D	Tie-Bar Size	Spacing
Less than 9"	#5	3'-0" c/c
9" through 12"	#6	3'-0" c/c
Greater than 12"	#6	2'-0" c/c
	or #7	3'-0" c/c



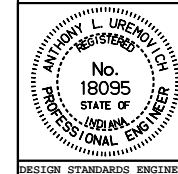
SECTION A-A



PLAN VIEW

**METHOD OF PLACING TIE-BAR
FOR LONGITUDINAL CONSTRUCTION JOINT**

INDIANA DEPARTMENT OF TRANSPORTATION
**LONGITUDINAL CONSTRUCTION
 JOINT**
 SEPTEMBER 1999
 STANDARD DRAWING NO. **E 503-CCPJ-07**



/s/ Anthony L. Urenovich 9-01-99
 DESIGN STANDARDS ENGINEER DATE

/s/ Donald W. Lucas 9-01-99
 CHIEF HIGHWAY ENGINEER DATE

DESIGN STANDARDS ENGINEER