

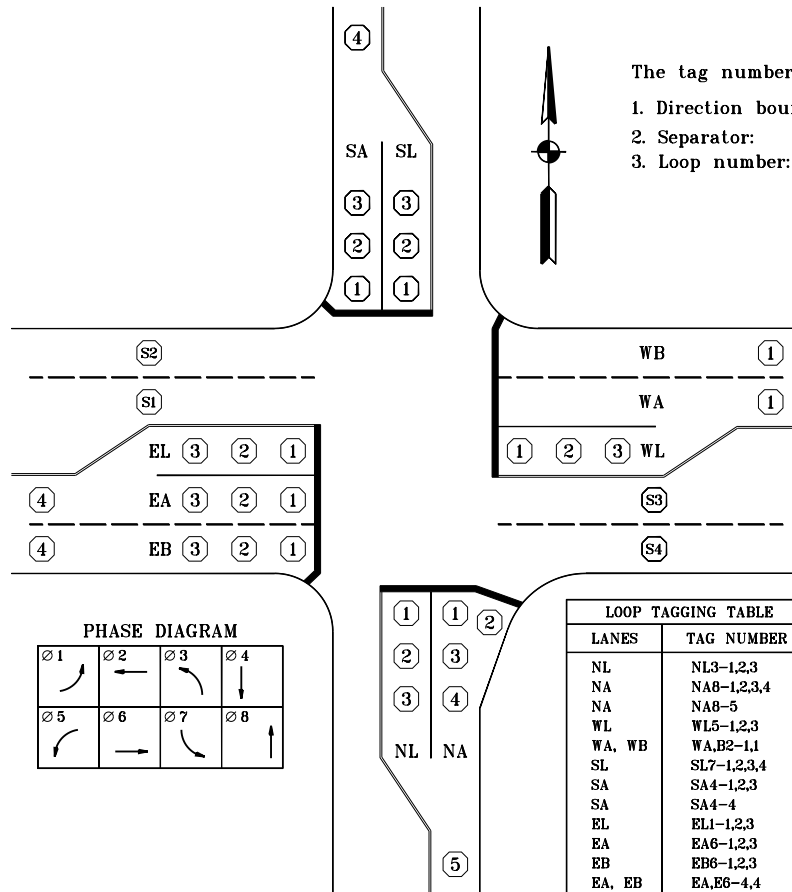
## LOOP TAGGING SYSTEM

Each loop lead-in cable (2C/16) shall be tagged according to the designation shown on the plans. The tag numbers for lead-in cable shall be assigned as follows:

1. Direction bound: N, S, E, or W.
2. Lane designation: L = Left turn.  
 A = Through lane closest to centerline of roadway.  
 B = Next lane out from centerline of roadway.  
 Alphabet is continued to lane closest to edge of pavement.
3. Phase number: 1 through 8.
4. Separator: -
5. Loop number: 1 = Loop closest to stop line.  
 2 = Next loop away from stop line.  
 Numbering is continued to loop farthest from stop line.

The tag numbers for system loops shall be assigned as follows:

1. Direction bound and lane designation are the same as for lead-in cable.
2. Separator: -
3. Loop number: S1 is used for the southernmost approach.  
 Numbering is continued in a clockwise direction beginning with S2.



Source Sheet: NONE

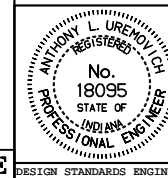
All dimensions are in mm unless otherwise specified.

INDIANA DEPARTMENT OF TRANSPORTATION

### LOOP TAGGING SYSTEM

MARCH 1995

STANDARD DRAWING NO. 805-SGLT-01



/s/ Anthony L. Uremovich 3-01-95  
DESIGN STANDARDS ENGINEER DATE

/s/ Donald W. Lucas 3-01-95  
CHIEF HIGHWAY ENGINEER DATE

DESIGN STANDARDS ENGINEER