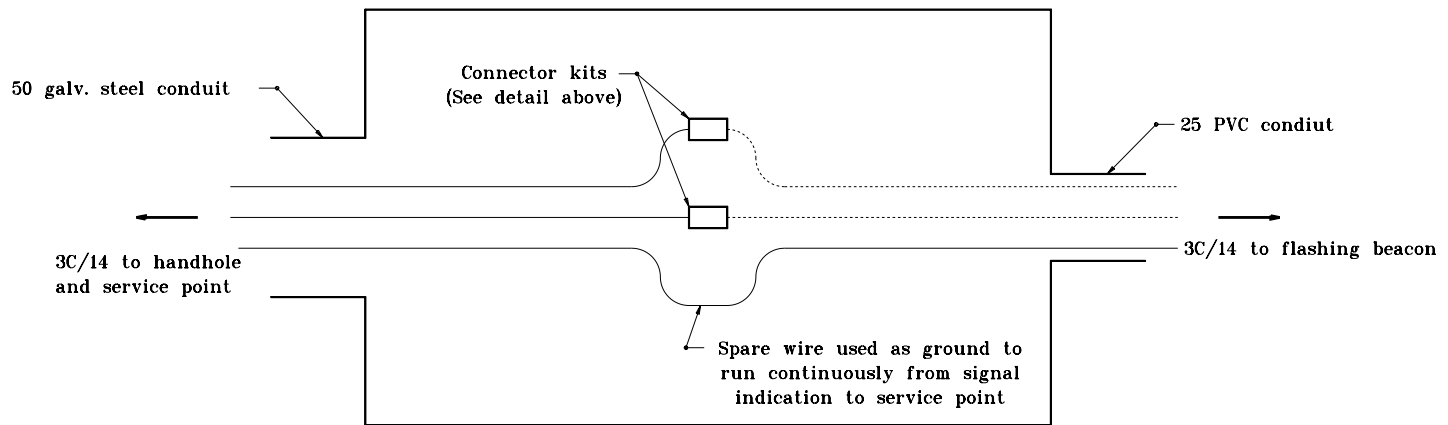
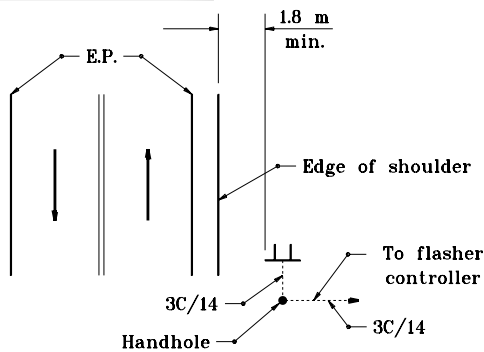


**DISCONNECT CONNECTOR KIT  
TO BE USED IN DETECTOR HOUSING**

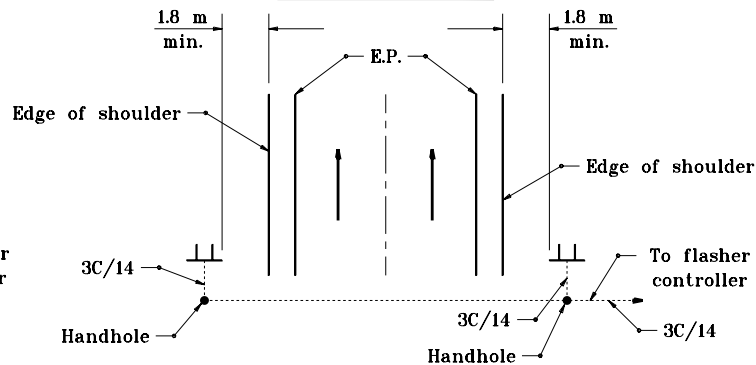


**DETECTOR HOUSING CONNECTIONS DETAIL**

**SINGLE LANE ROADWAY**



**MULTI-LANE ROADWAY**



**TYPICAL FLASHING BEACON CONFIGURATION**

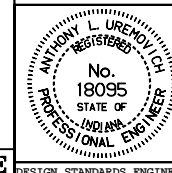
All dimensions are in mm unless otherwise specified.

INDIANA DEPARTMENT OF TRANSPORTATION

**FLASHING BEACON WITH  
WARNING SIGN DETAILS**

MAY 1998

STANDARD DRAWING NO. 805-SGFB-02



/s/ Anthony L. Uremovich 5-01-98  
DESIGN STANDARDS ENGINEER      DATE

/s/ Donald W. Lucas 5-01-98  
CHIEF HIGHWAY ENGINEER      DATE

Source Sheet: NONE