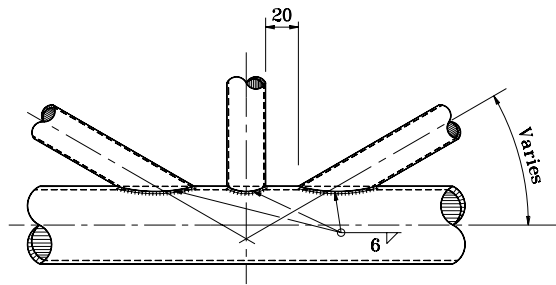


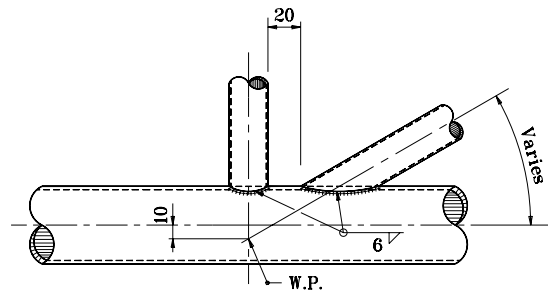
GENERAL NOTES

1. All bracing members shall be machined to provide a snug fit to the chord members along the entire edge of bracing members before welding.

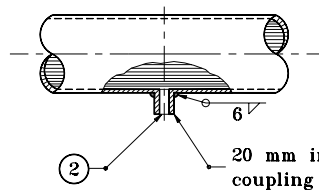
② Drill 25 dia. hole in chord—round edges.



**DETAIL A
PANEL CONNECTION**

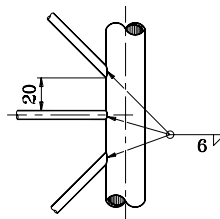


**DETAIL B
PANEL CONNECTION**



**DETAIL C
WIRE OUTLET**

② 20 mm inside diameter aluminum coupling welded into hole in chord



TYPICAL WELD DETAIL

All dimensions are in mm unless otherwise specified.

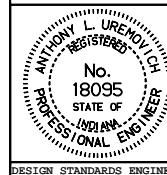
INDIANA DEPARTMENT OF TRANSPORTATION

ALUMINUM STRUCTURE

DETAILS

SEPTEMBER 2001

STANDARD DRAWING NO. 802-SNOH-05



/s/ Anthony L. Uremovich 9-04-01
DESIGN STANDARDS ENGINEER DATE

/s/ Firooz Zandi 9-04-01
CHIEF HIGHWAY ENGINEER DATE

DESIGN STANDARDS ENGINEER