

SIGN NUMBER	SIGN MESSAGE	POST DESIGN		SIGN SIZE	SIGN COLOR		BORDER WIDTH	MARGIN WIDTH	LETTER HEIGHT SERIES-LINE 1	LETTER HEIGHT SERIES-LINE 2	LETTER HEIGHT SERIES-LINE 3	LETTER HEIGHT SERIES-LINE 4	ARROW SIZE		CORNER RADIUS	NUMBER OF POSTS	
		100x100 WOOD	STEEL		BACKGROUND	COPY							HEAD	SHAFT		ONE	TWO
XW101-1	"Mowing Crews Ahead"	*	A	900 x 900	Orange	Black	20	15	150 - Series C	150 - Series C	150 - Series C				55		X
XW101-1-A	"Mowing Crews Ahead"	*	B	1200 x 1200	Orange	Black	30	20	200 - Series C	200 - Series C	200 - Series C				75		X
XW102-1	"Mowing Crews Next _____ Miles"	*	A	900 x 900	Orange	Black	20	15	150 - Series C	150 - Series C	100 - Series C	100 - Series C			55		X
XW102-1-A	"Mowing Crews Next _____ Miles"	*	B	1200 x 1200	Orange	Black	30	20	200 - Series C	200 - Series C	150 - Series C	150 - Series C			75		X
XW103-1	"Watch For Stopped Traffic"	*	B	1200 x 1200	Orange	Black	30	20	175 - Series C	175 - Series C	175 - Series C				75		X
XW104-1	"Overhead Sign Installation"	*	B	1500 x 600	Orange	Black	15	10	150 - Series C	150 - Series C					35		X
XW105-1-A	"Right Lane Exit Open"	*	B	1200 x 1200	Orange	Black	30	20	150 - Series C	150 - Series C					75		X
XW106-1-A	"Exit Closed"	*	B	1200 x 1200	Orange	Black	30	20	175 - Series C	175 - Series C					75		X
XW106-2-A	"Exit Open"	*	B	1200 x 1200	Orange	Black	30	20	175 - Series C	175 - Series C					75		X
XW108-1	"Utility Work Ahead"	*	A	900 x 900	Orange	Black	20	15	150 - Series D	150 - Series D	150 - Series D				55		X
XW108-1-A	"Utility Work Ahead"	*	B	1200 x 1200	Orange	Black	30	20	150 - Series C	150 - Series C	150 - Series C				75		X
XW109-1	"Exit" (above black arrow)	*	B	1200 x 1200	Orange	Black	30	20	300 - Series D						75		X
R2-1	"Speed limit _____"	*	A	600 x 750	White	Black	15	10	100 - Series E	100 - Series E	250 - Series E				35	X	
R2-1-B	"Speed limit _____"	*	B	1200 x 1500	White	Black	30	20	200 - Series E	200 - Series E	400 - Series E				75		X
R2-15b-B	"Reduced Speed _____ Ahead"	----	----	1200 x 1500	White	Black	30	20	200 - Series E	200 - Series E	350 - Series E	200 - Series E			75		----
R3-2-A (R or L)	(No _____ turn symbol)	*	A	750 x 750	White	Black	20	10							50	X	
R3-2-C (R or L)	(No _____ turn symbol)	*	B	1200 x 1200	White	Black	30	20							75		X
R4-1	"Do Not Pass"	*	A	600 x 750	White	Black	15	10	150 - Series D	150 - Series D	150 - Series D				45	X	
R4-1-B	"Do Not Pass"	*	B	1200 x 1500	White	Black	30	20	250 - Series D	250 - Series D	250 - Series D				75		X
R5-1-A	"Do Not Enter" (inside symbol)	*	A	900 x 900	Red	White	Radius 445		125 - Series D	150 x 780 Bar	125 - Series D				55		X
R5-1-B	"Do Not Enter" (inside symbol)	*	B	1200 x 1200	Red	White	Radius 595		150 - Series D	200 x 1015 Bar	150 - Series D				75		X
R8-1 (R or L)	"One Way" (inside white arrow)	*	A	900 x 300	Black & White	Black	----	10	100 - Series D				190 x 215	570 x 135	35		X
R8-2-A (R or L)	"One Way" (above black arrow)	*	A	600 x 750	White	Black	15	10	150 - Series D	150 - Series D			135 x 150	200 x 65	35	X	
R11-2	"Road Closed"	*	B	1200 x 750	White	Black	20	10	200 - Series D	200 - Series D					45		X
R11-3	"Road Closed _____ Miles Ahead "Local Traffic Only"	*	B	1500 x 750	White	Black	20	10	150 - Series C	125 - Series C		100 - Series C			45		X
R11-4	"Road Closed To Thru Traffic"	*	B	1500 x 750	White	Black	20	10	150 - Series C	125 - Series C		150 - Series C			45		X
R12-1	"Weight Limit _____ Tons"	*	A	600 x 750	White	Black	15	10	100 - Series D	100 - Series D	125 - Series E	125 - Series D			35	X	
R12-1-A	"Weight Limit _____ Tons"	*	B	900 x 1200	White	Black	20	15	150 - Series D	150 - Series D	200 - Series E	200 - Series D			55		X
S 4-4	"When Flashing" plate	----	----	1200 x 500	White	Black	15	10	125 - Series D	125 - Series D					35	----	----

\* Wood post permitted.

**GENERAL NOTES**

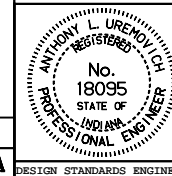
- See Standard Drawing 801-TCSN-11 for additional general notes.

All dimensions are in mm unless otherwise specified.  
**INDIANA DEPARTMENT OF TRANSPORTATION**

**SIGN DESIGN DETAILS**

SEPTEMBER 1999

STANDARD DRAWING NO. **801-TCSN-13**



/s/ Anthony L. Uremovich 9-01-99  
 DESIGN STANDARDS ENGINEER DATE

/s/ Donald W. Lucas 9-01-99  
 CHIEF HIGHWAY ENGINEER DATE

**Source Sheet: Det3A,  
 Source Sheet: Det5, 5A**

DESIGN STANDARDS ENGINEER