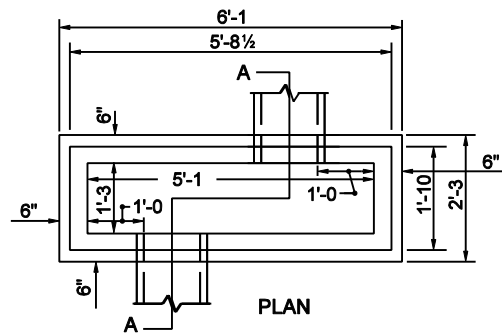
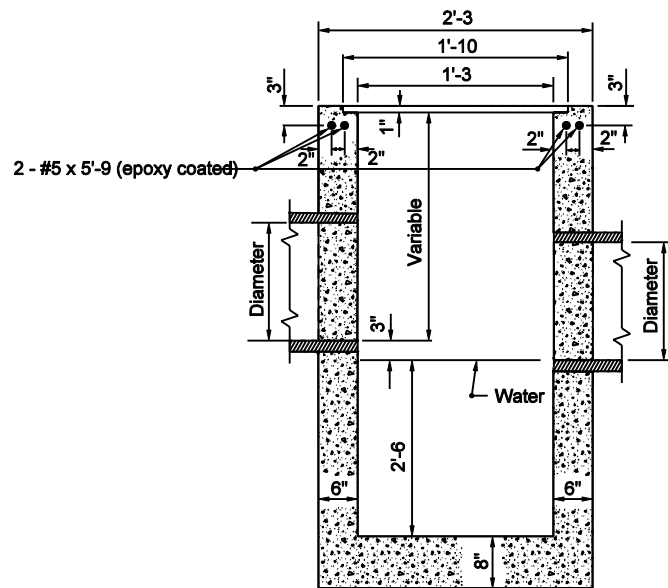


**PLACEMENT DETAIL FOR
CASTING**



CATCH BASIN TYPE S



SECTION A-A

INDIANA DEPARTMENT OF TRANSPORTATION	
CATCH BASIN TYPE S	
SEPTEMBER 2003	
STANDARD DRAWING NO. E 720-CBST-07	
	/s/ <i>Richard L. VanCleave</i> 9-02-03 DESIGN STANDARDS ENGINEER DATE
	/s/ <i>Richard K. Smutzer</i> 9-02-03 CHIEF HIGHWAY ENGINEER DATE
DESIGN STANDARDS ENGINEER	