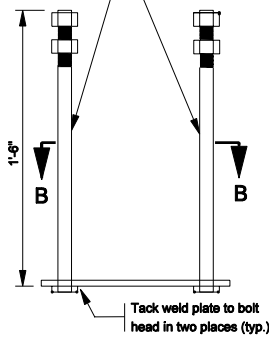
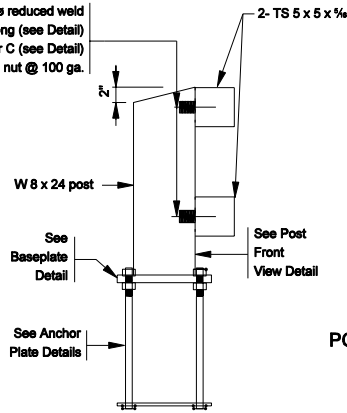


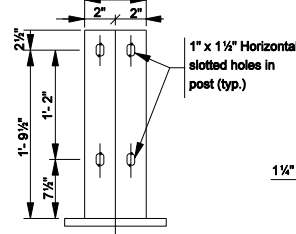
4 - 7/8" \varnothing anchor bolts threaded 5" min. with 2 nuts and flat washers



2 - Threaded 3/8" \varnothing reduced weld base stud x 2" long (see Detail) w/1- \varnothing washer C (see Detail) 1 lock washer and nut @ 100 ga.



SECTION A - A

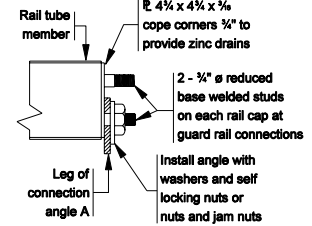
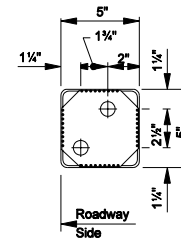


POST FRONT VIEW DETAIL

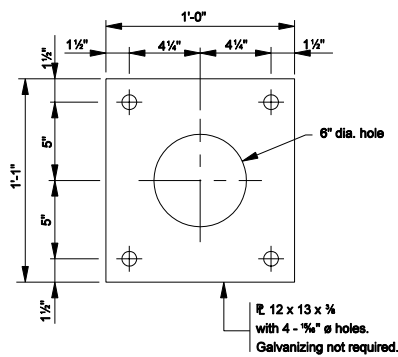
1

NOTES:

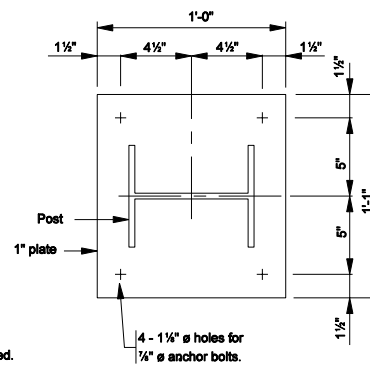
Gap of 1" unless noted otherwise on plans. Railing splice required in panel with a deck expansion joint.



RAIL CAP DETAIL



SECTION B - B ANCHOR PLATE DETAILS



BASE PLATE DETAILS

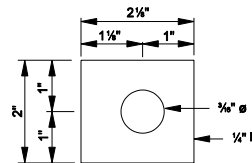
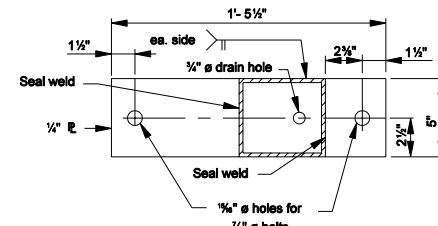
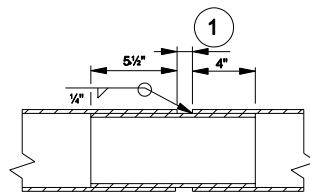


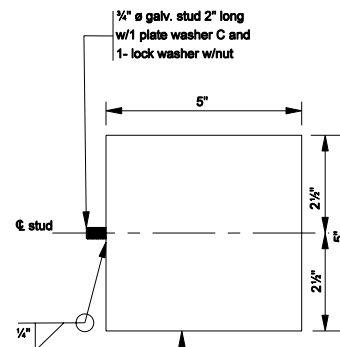
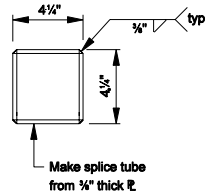
PLATE WASHER C DETAIL



TOP RAIL END VIEW B - B



RAILING SPLICE DETAILS



BASE WELD STUD DETAIL

INDIANA DEPARTMENT OF TRANSPORTATION	
RAILING, CF-1	
MARCH 2006	
STANDARD DRAWING NO. E 706-BRPM-02	
	/s/ Richard L. VanCleave 3-01-06 DESIGN STANDARDS ENGINEER DATE
	/s/ Richard K. Smutzer 3-01-06 CHIEF HIGHWAY ENGINEER DATE
DESIGN STANDARDS ENGINEER	