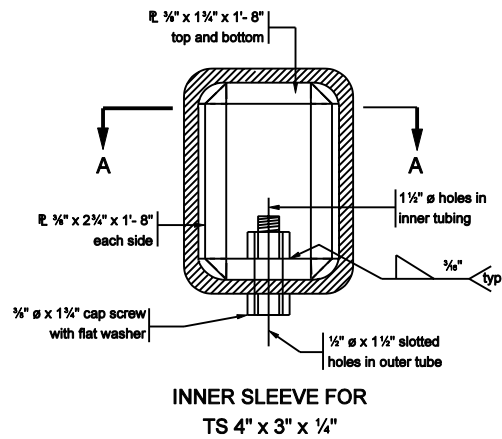
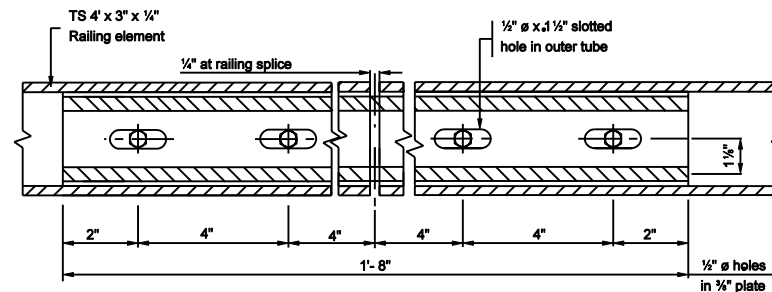


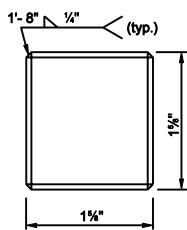
FINISHED DIMENSIONS
OF INNER SLEEVE FOR
TS 4" x 3" x 1/4"



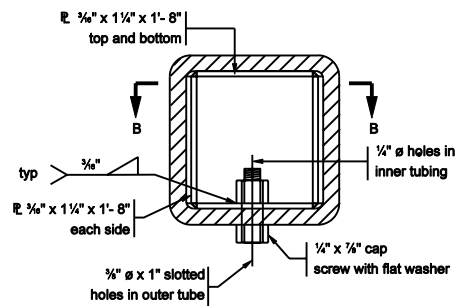
INNER SLEEVE FOR
TS 4" x 3" x 1/4"



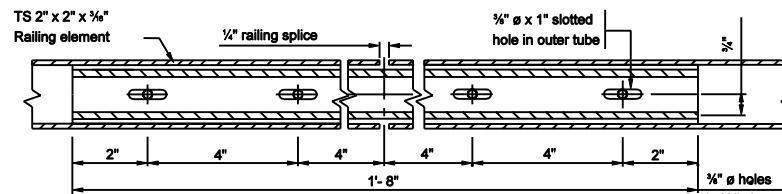
SECTION A - A



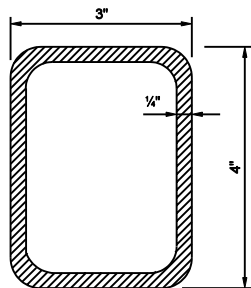
FINISHED DIMENSIONS
OF INNER SLEEVE FOR
TS 2" x 2" x 3/16"



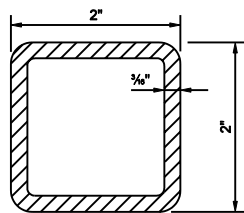
INNER SLEEVE FOR
TS 2" x 2" x 3/16"



SECTION B - B



TS 4" x 3" x 1/4"



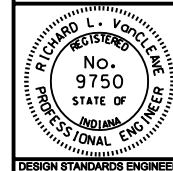
TS 2" x 2" x 3/16"

INDIANA DEPARTMENT OF TRANSPORTATION

RAILING, PF & PS
DETAILS

SEPTEMBER 2003

STANDARD DRAWING NO. E 706-BRPP-05



/s/ Richard L. VanCleave 9-02-03
DESIGN STANDARDS ENGINEER DATE

/s/ Richard K. Smutzer 9-02-03
CHIEF HIGHWAY ENGINEER DATE

DESIGN STANDARDS ENGINEER