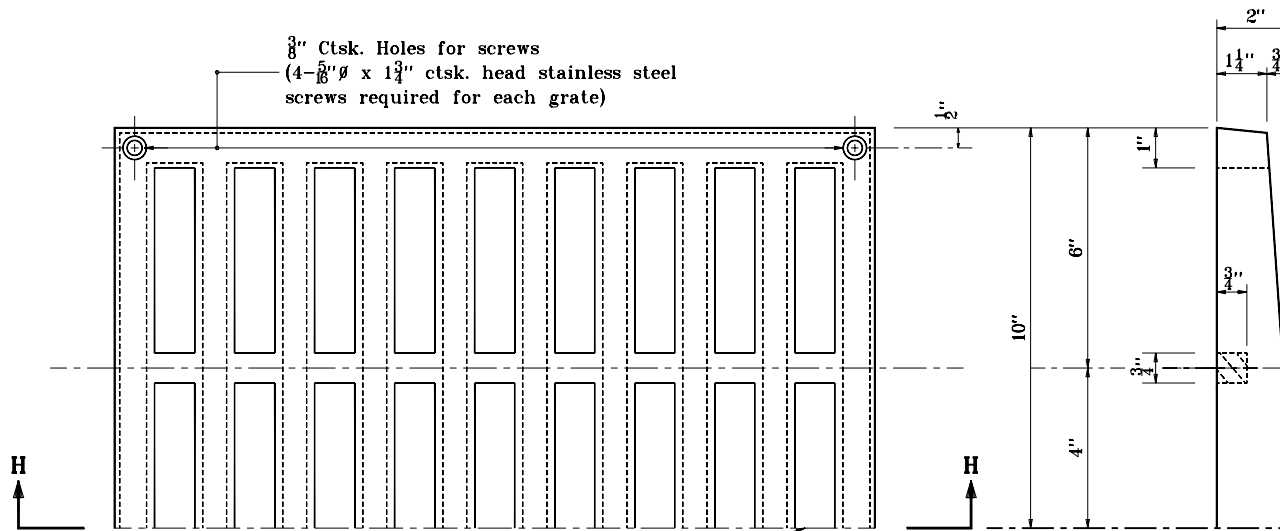


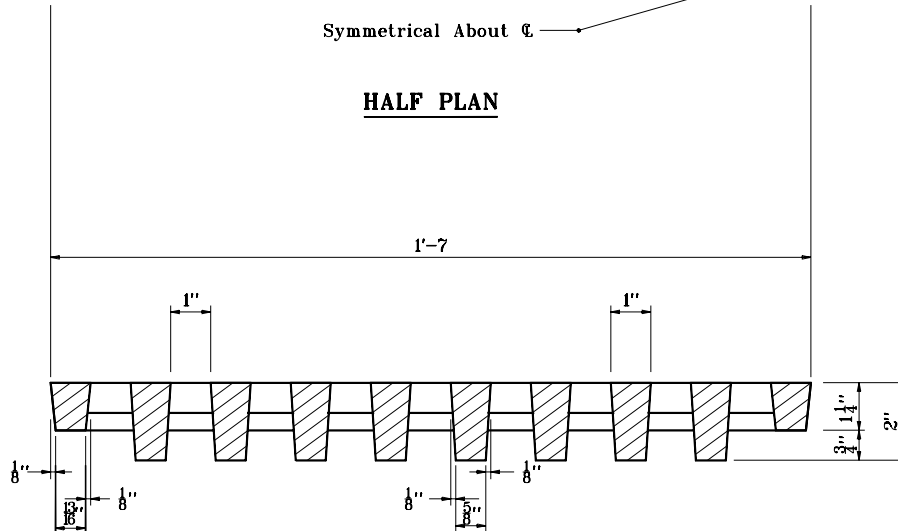
**GENERAL NOTES**

1. Fit grate to box in shop and ship in place.
2. This grate is used with Roadway Drain Type OS and weighs approximately 80 lb.



Symmetrical About  $\epsilon$

**HALF PLAN**



**SECTION H-H**

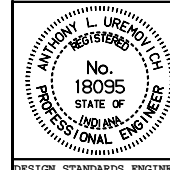
INDIANA DEPARTMENT OF TRANSPORTATION

**CASTING DETAILS**

**GRATE D**

SEPTEMBER 1994

STANDARD DRAWING NO. **E 704-BDCG-02**



DETAILS PLACED IN THIS FORMAT 11-15-99

/s/ Anthony L. Uremovich 11-15-99  
DESIGN STANDARDS ENGINEER DATE

/s/ Firooz Zandi 11-15-99  
CHIEF HIGHWAY ENGINEER DATE

DESIGN STANDARDS ENGINEER

ORIGINALLY APPROVED 9-03-94