

NOTES:

- ① See Standard Drawing 808-MKRM-01 for Detail A.
- 2. If ramp has reverse curves, see Standard Drawing 808-MKRM-04 for Details.
- ③ See Standard Drawing 808-MKRM-07 for Detail G and Standard Drawing 808-MKRM-08 for Detail H.

INTERSTATE ROUTE

R.P.M. e 24 m spa.
typical

LEGEND

- ◁ One-way white marker
- ◄ Two-way yellow/red marker
- Lane line

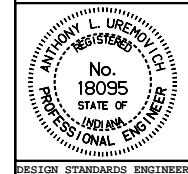
**TYPICAL ENTRANCE RAMP SHOWING LOCATIONS OF
RAISED PAVEMENT MARKERS (CLOVERLEAF INTERCHANGE))
DETAIL C**

All dimensions are in mm unless otherwise specified.

INDIANA DEPARTMENT OF TRANSPORTATION

**RAISED PAVEMENT MARKERS
TYPICAL LOCATIONS**
JANUARY 2000

STANDARD DRAWING NO. **808-MKRM-03**



/s/ Anthony L. Uremovich 1-03-00
DESIGN STANDARDS ENGINEER DATE

/s/ Firooz Zandi 1-03-00
CHIEF HIGHWAY ENGINEER DATE

DESIGN STANDARDS ENGINEER