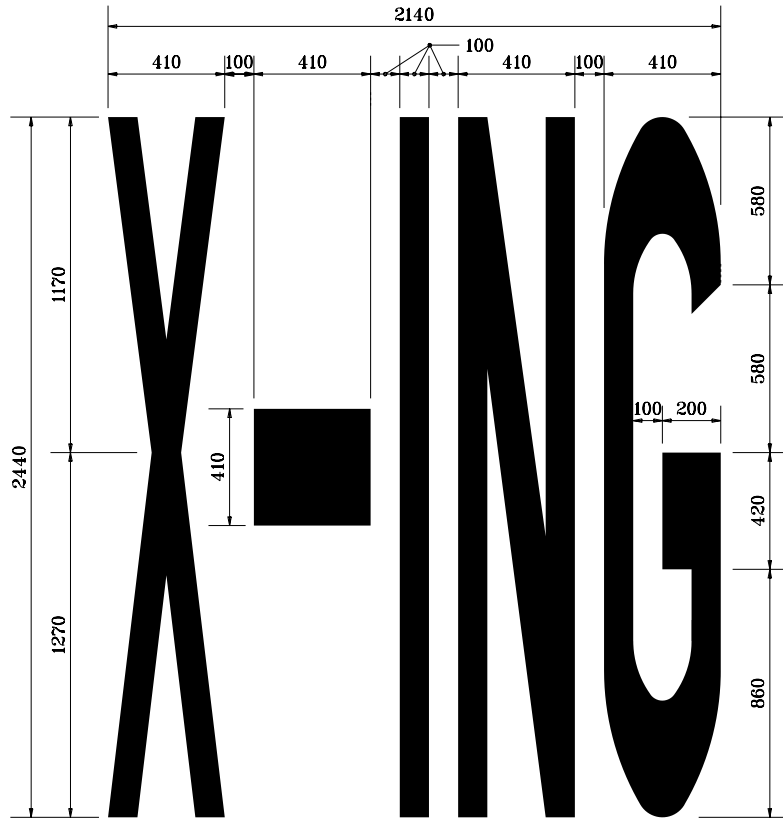


GENERAL NOTES

1. Horizontal strokes are 1'-4 wide.
vertical strokes are 4" wide.
2. See Standard Drawing 807-
MKPM-04 for Details for "G".



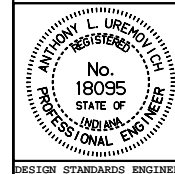
All dimensions are in mm unless otherwise specified.

INDIANA DEPARTMENT OF TRANSPORTATION

TRANSVERSE MARKINGS

JANUARY 2000

STANDARD DRAWING NO. 808-MKPM-05



/s/ Anthony L. Uremovich 1-03-00
DESIGN STANDARDS ENGINEER DATE

/s/ Firooz Zandi 1-03-00
CHIEF HIGHWAY ENGINEER DATE

DESIGN STANDARDS ENGINEER