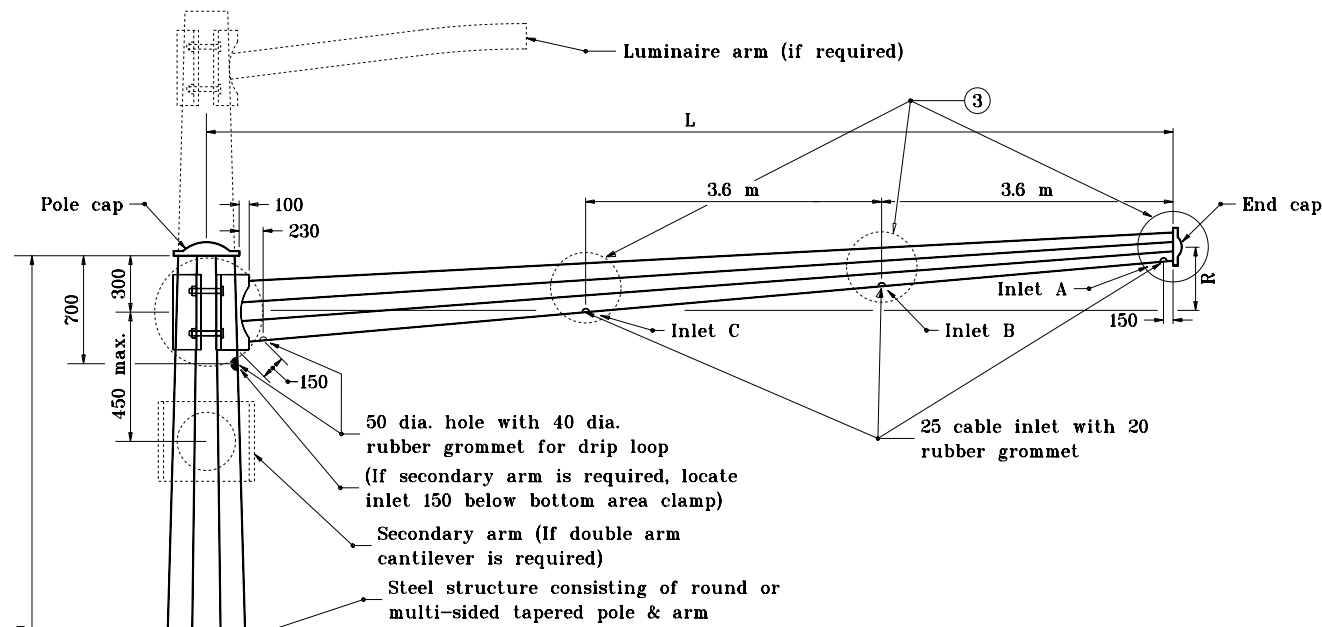


GENERAL NOTES

1. The upper 1.2 m to 1.8 m of the pole can be non-tapered.
- ② See Standard Drawing 805-SGMA-04 for Detail B.
- ③ See Standard Drawing 805-SGMA-04 for Detail C.



L (m) *	R After Loading	Cable Inlets Req'd.
3.6	150	A
4.6	190	A, B
6.1	250	A, B
7.6	320	A, B
9.1	380	A, B
10.7	450	A, B, C
12.2	510	A, B, C

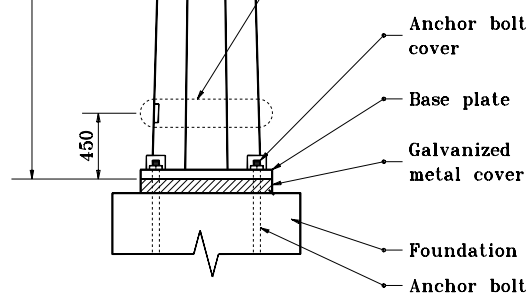
* The lengths listed in this table are the only permissible lengths

Pole height (varies)

50 dia. hole with 40 dia. rubber grommet for drip loop
(If secondary arm is required, locate inlet 150 below bottom area clamp)

Secondary arm (If double arm cantilever is required)

Steel structure consisting of round or multi-sided tapered pole & arm



Vertical Clearance Criteria
 Maintain 4.9 m minimum mast arm clearance above pavement.
 Maintain 5.2 m minimum and 5.8 m maximum clearances from top of pavement to lowest signal head.

All dimensions are in mm unless otherwise specified.

INDIANA DEPARTMENT OF TRANSPORTATION

SIGNAL CANTILEVER

SINGLE ARM

SEPTEMBER 1998

STANDARD DRAWING NO. **805-SGMA-01**

	/s/ Anthony L. Uremovich 9-01-98 DESIGN STANDARDS ENGINEER DATE
	/s/ Donald W. Lucas 9-01-98 CHIEF HIGHWAY ENGINEER DATE

Source Sheet: NONE