

GENERAL NOTES

1. All series M(S) "JCT", cardinal directions, "TO", and arrows shall be white background with black legend and border.
2. All series M(I) "JCT", cardinal directions, "TO", and arrows shall be blue background with white legend and border.
3. Numerals sometimes cannot be accommodated within the space available. For this situation, the standard series D numeral may be reduced to series C. As a second choice, use the next smaller height commonly available.
4. For independent use of sheet signs, a nylon and metal washer shall be placed between each bolt head and the face of the metal sign. See Sign Bolt Detail on Standard Drawing 802-SNGS-07.
5. Visually space numbers about vertical centerline of shield.
6. Where white is specified herein as a color, it shall be understood to include silver-colored reflecting coatings or elements as shown that reflect white light.
7. Fabrication details for the signs shown shall be as shown in the Standard Highway signs booklet. Shop drawings shall be supplied for all other signs not found in such booklet
8. For hole punch pattern see shop drawings.

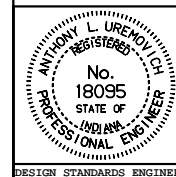
All dimensions are in mm unless otherwise specified.

INDIANA DEPARTMENT OF TRANSPORTATION

ROUTE MARKER DETAILS

JANUARY 2000

STANDARD DRAWING NO. **802-SNGS-04**



/s/ Anthony L. Uremovich 1-03-00
DESIGN STANDARDS ENGINEER DATE

/s/ Firooz Zandi 1-03-00
CHIEF HIGHWAY ENGINEER DATE

DESIGN STANDARDS ENGINEER