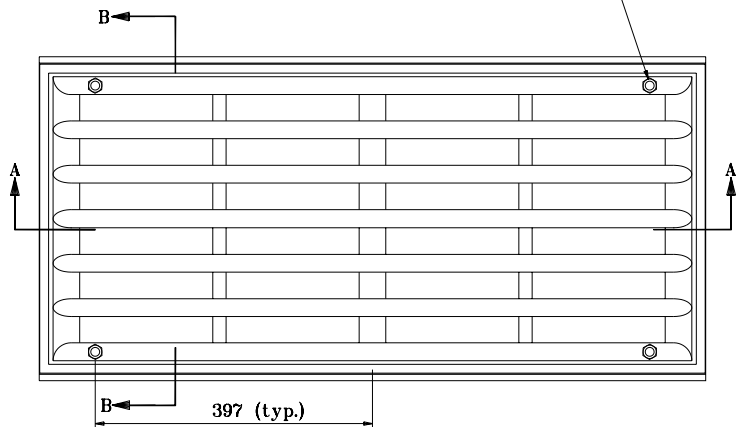
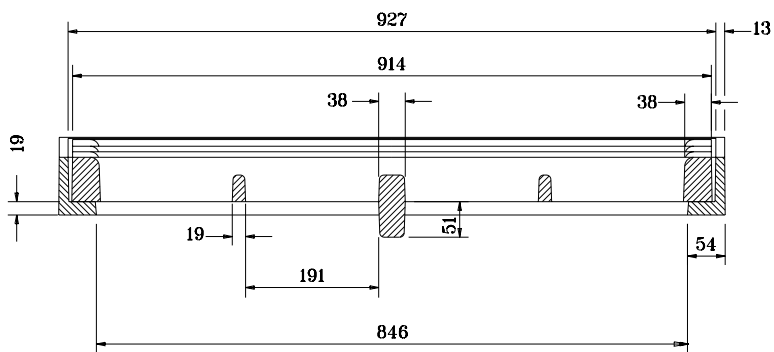


Drill and tap for  
10 x 51 stainless steel  
hex bolt with washer (4 places)

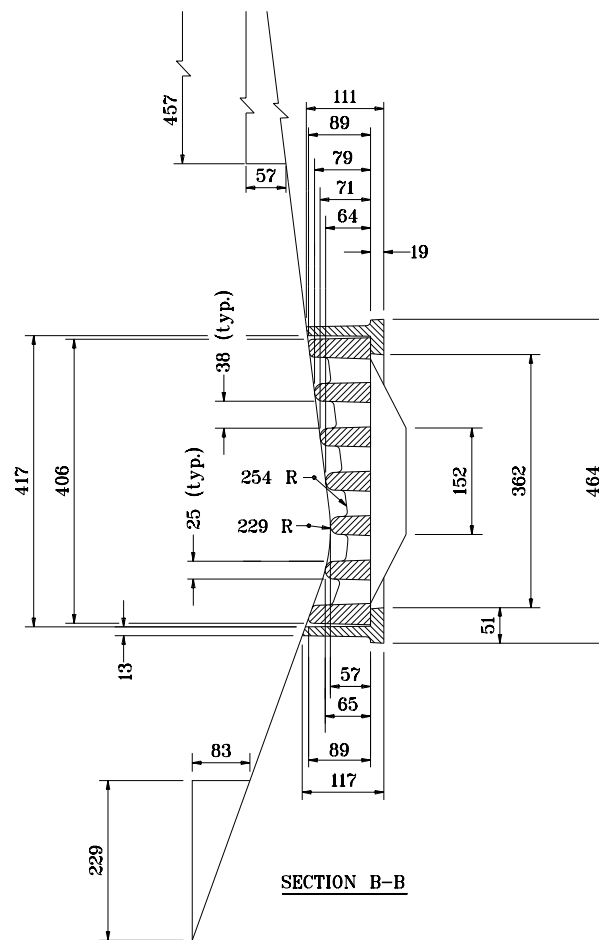


397 (typ.)

PLAN



SECTION A-A



SECTION B-B

All dimensions are in mm unless otherwise specified.

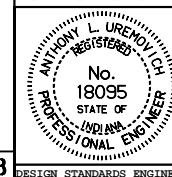
INDIANA DEPARTMENT OF TRANSPORTATION

**INLET CASTING**

**TYPE 6**

SEPTEMBER 1998

STANDARD DRAWING NO. **720-INCA-01**



*/s/ Anthony L. Uremovich* 9-01-98  
DESIGN STANDARDS ENGINEER DATE

*/s/ Donald W. Lucas* 9-01-98  
CHIEF HIGHWAY ENGINEER DATE

Source Sheet: **MC3**