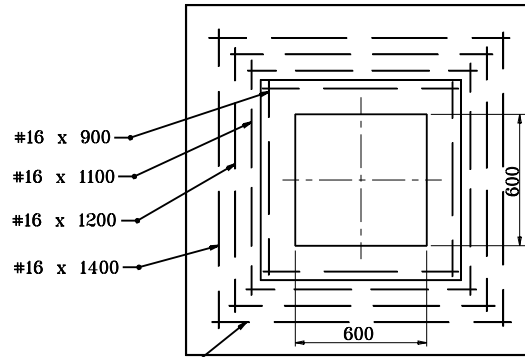
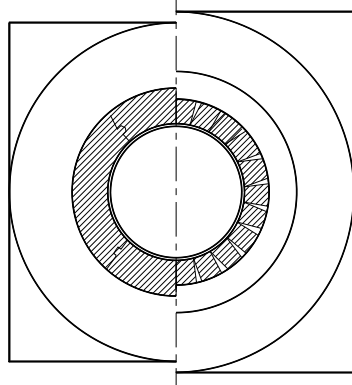
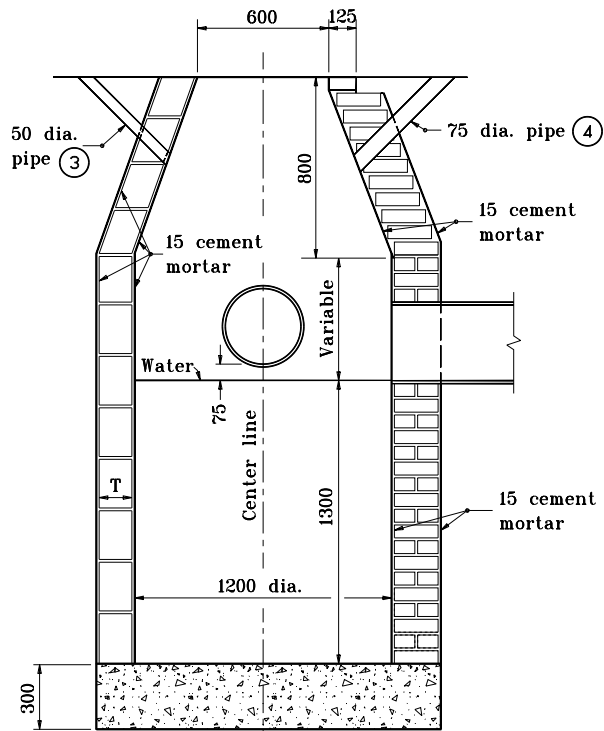


**GENERAL NOTES**

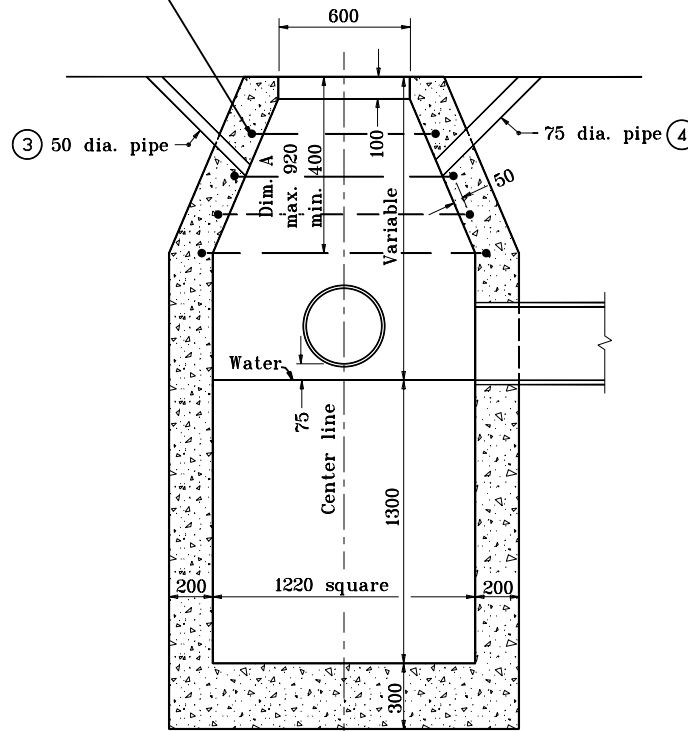
1. Brick, block, or concrete may be used.
2. Precast catch basin type W may be substituted for catch basin type A.
- ③ 50 dia. pipe drain from bottom of curb to inlet. Aggregate to be placed around inlet end of pipe.
- ④ 75 dia. pipe to be kept open for drainage of subgrade or base until surface is placed.
5. Reinforcement required if Dim. A < 760. Reinforcement not required if Dim. A ≥ 760.



#16 ea. layer



**BRICK OR BLOCK**



**CONCRETE**

Source Sheet: MD1

All dimensions are in mm unless otherwise specified.

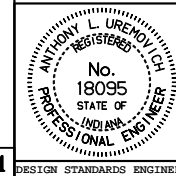
INDIANA DEPARTMENT OF TRANSPORTATION

**CATCH BASIN**

**TYPE A**

SEPTEMBER 1997

STANDARD DRAWING NO. 720-CBST-01



/s/ Anthony L. Uremovich 9-01-97  
DESIGN STANDARDS ENGINEER DATE

/s/ Donald W. Lucas 9-01-97  
CHIEF HIGHWAY ENGINEER DATE