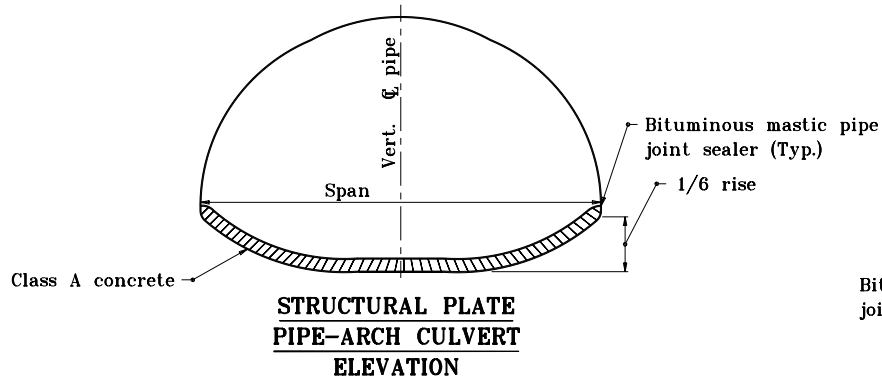
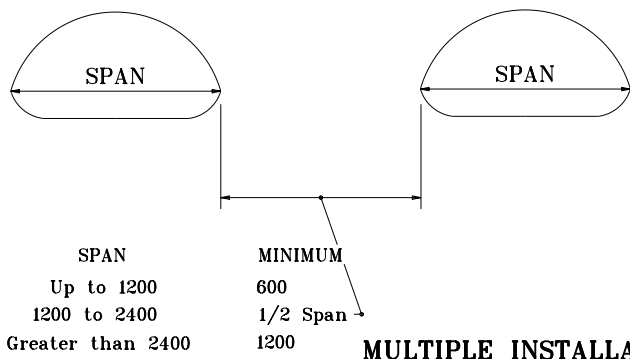


END STABILIZATION OF 75 x 25 CORRUGATED STEEL PIPE-ARCH SECTIONS ①

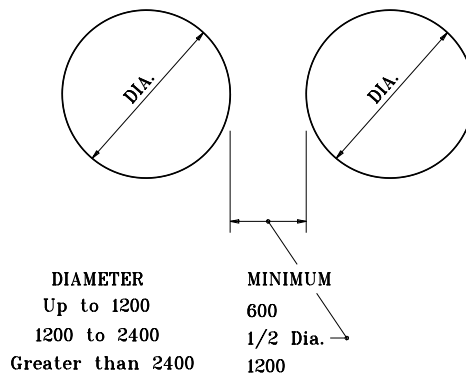


STRUCTURAL PLATE PIPE-ARCH CULVERT ELEVATION

CONCRETE FIELD PAVED INVERT DETAILS

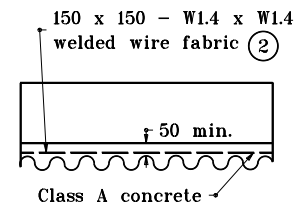


MULTIPLE INSTALLATIONS

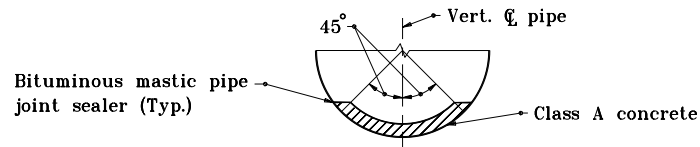


GENERAL NOTES

- ① In order to maintain their manufactured shape, all 75 x 25 corrugated steel pipe-arch sections shall have wire ties attached at each end as shown in the detail. The wire ties shall be attached across the largest vertical and horizontal dimension of the pipe-arch. The wire ties shall be installed by the manufacturer and shall remain in place until the on-site installation is complete.
- ② Welded wire fabric shall be securely wired to every second circumferential bolt and every twelfth longitudinal bolt.



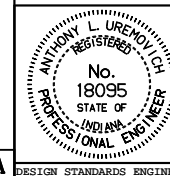
TYPICAL LONGITUDINAL SECTION



STRUCTURAL PLATE PIPE CULVERT

All dimensions are in mm unless otherwise specified.

INDIANA DEPARTMENT OF TRANSPORTATION
MISCELLANEOUS PIPE DETAILS
 JANUARY 1998
 STANDARD DRAWING NO. **715-PIPE-02**



/s/ Anthony L. Uremovich 1-02-98
 DESIGN STANDARDS ENGINEER DATE

/s/ Donald W. Lucas 1-02-98
 CHIEF HIGHWAY ENGINEER DATE

Source Sheet: **MPA**