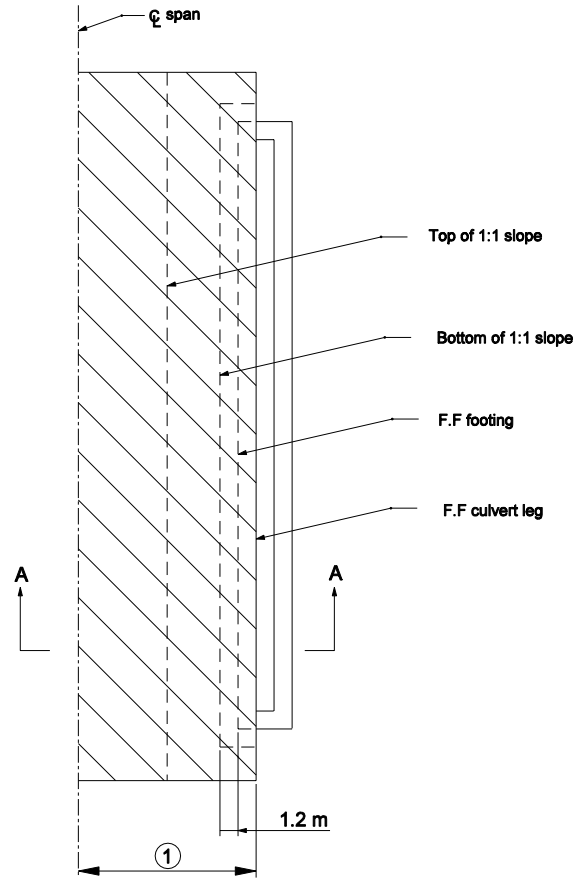


**PLAN - WITH WINGWALLS**



**PLAN - PROJECTING**

**NOTES:**

- ① Half of span width.
2. Crosshatched area indicates riprap limits.
3. See Standard Drawing 714-CCSP-02 for Section A-A, for span length of 6.0 m or greater. See Standard Drawing 714-CCSP-03 for Section A-A for span length from 3.0 m to less than 6.0 m.

**RIPRAP METHOD**

F.F. = Front face

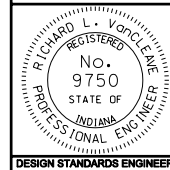
All Dimension are in mm unless otherwise specified

INDIANA DEPARTMENT OF TRANSPORTATION

**THREE-SIDED CONCRETE CULVERT  
SCOUR PROTECTION**

MARCH 2004

STANDARD DRAWING NO. 714-CCSP-01



/s/ Richard L. VanCleave 3/01/04  
DESIGN STANDARDS ENGINEER DATE

/s/ Richard K. Smutzer 3/01/04  
CHIEF HIGHWAY ENGINEER DATE

DESIGN STANDARDS ENGINEER