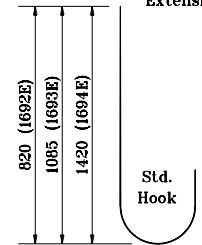
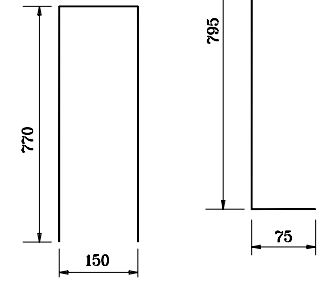


**NOTES:**

1. See Standard Drawing 703-BRST-01 for standard 180° bar bending detail.
2. All reinforcing bars designated "E" shall be epoxy coated.
3. Concrete in bridge railing transition to be class C.
4. See Standard Drawing 706-CBRT-02 for attachment of guardrail Type TGB.
5. See Standard Drawing 706-TASE-01, 02 & 05 for Bridge Railing Transition TBC Slab Extension.



Std. Hook  
**1692E x 1060**  
**1693E x 1325**  
**1694E x 1660**



**1691E x 1690**    **1695E x 870**

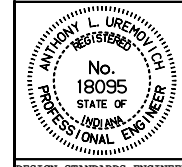
All dimensions are in mm unless otherwise specified.

INDIANA DEPARTMENT OF TRANSPORTATION

**CONCRETE BRIDGE RAILING  
 TRANSITION, TPS-2**

MAY 2000

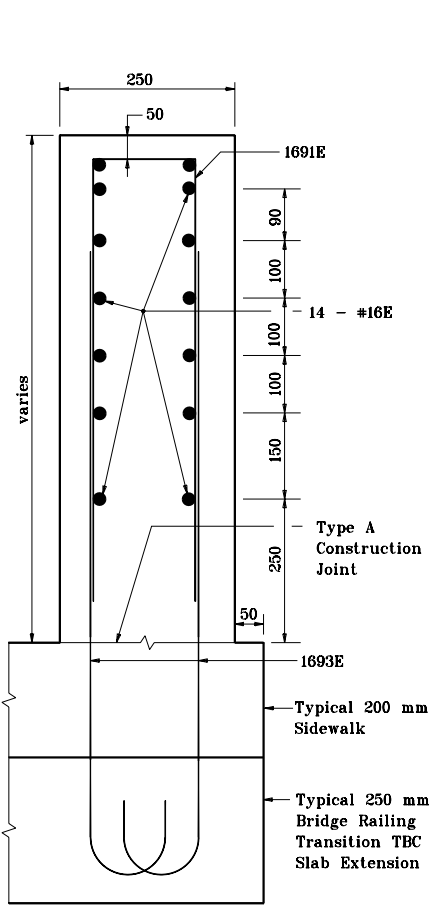
STANDARD DRAWING NO. **706-TTBP-08**



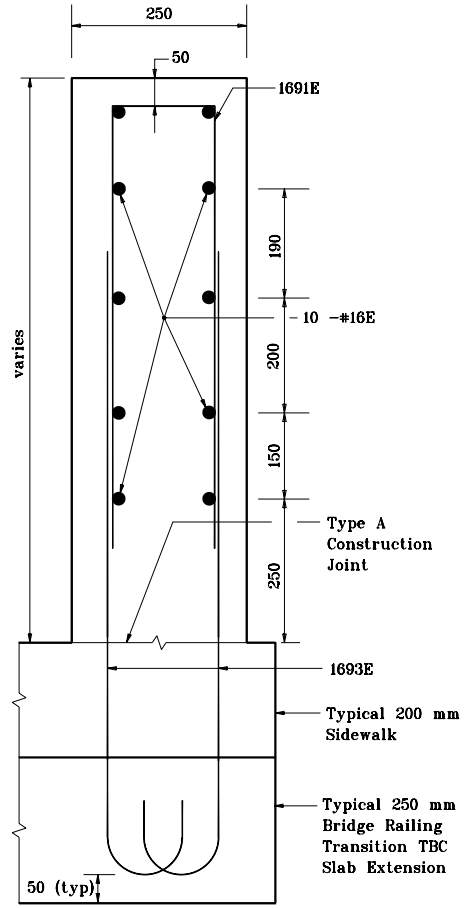
/s/ Anthony L. Uremovich 5-01-00  
 DESIGN STANDARDS ENGINEER    DATE

/s/ Firooz Zandi 5-01-00  
 CHIEF HIGHWAY ENGINEER    DATE

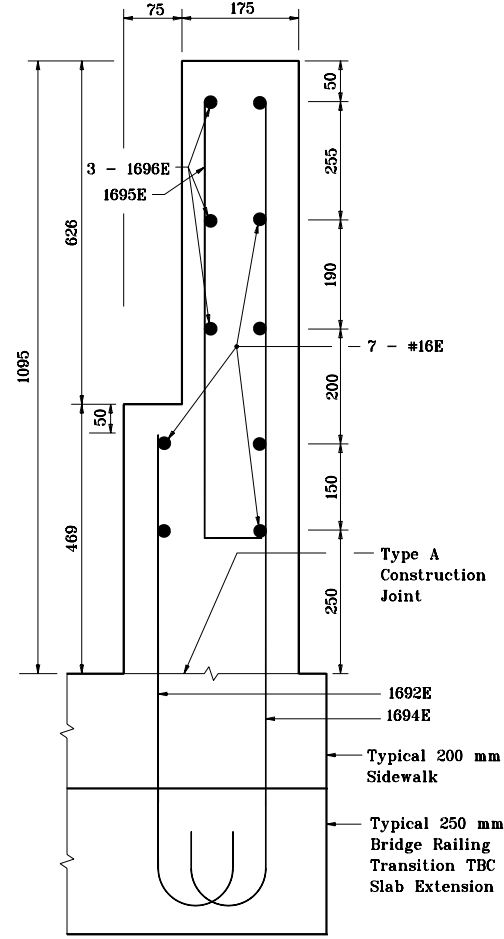
DESIGN STANDARDS ENGINEER



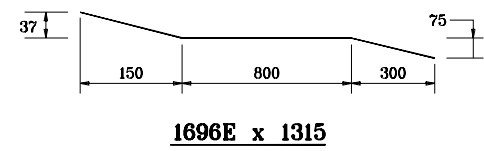
**Section A - A**



**Section B - B**



**Section C - C**



**1696E x 1315**

Type A Construction Joint

Type A Construction Joint

Type A Construction Joint

Typical 200 mm Sidewalk

Typical 200 mm Sidewalk

Typical 200 mm Sidewalk

Typical 250 mm Bridge Railing Transition TBC Slab Extension

Typical 250 mm Bridge Railing Transition TBC Slab Extension

Typical 250 mm Bridge Railing Transition TBC Slab Extension

50 (typ)