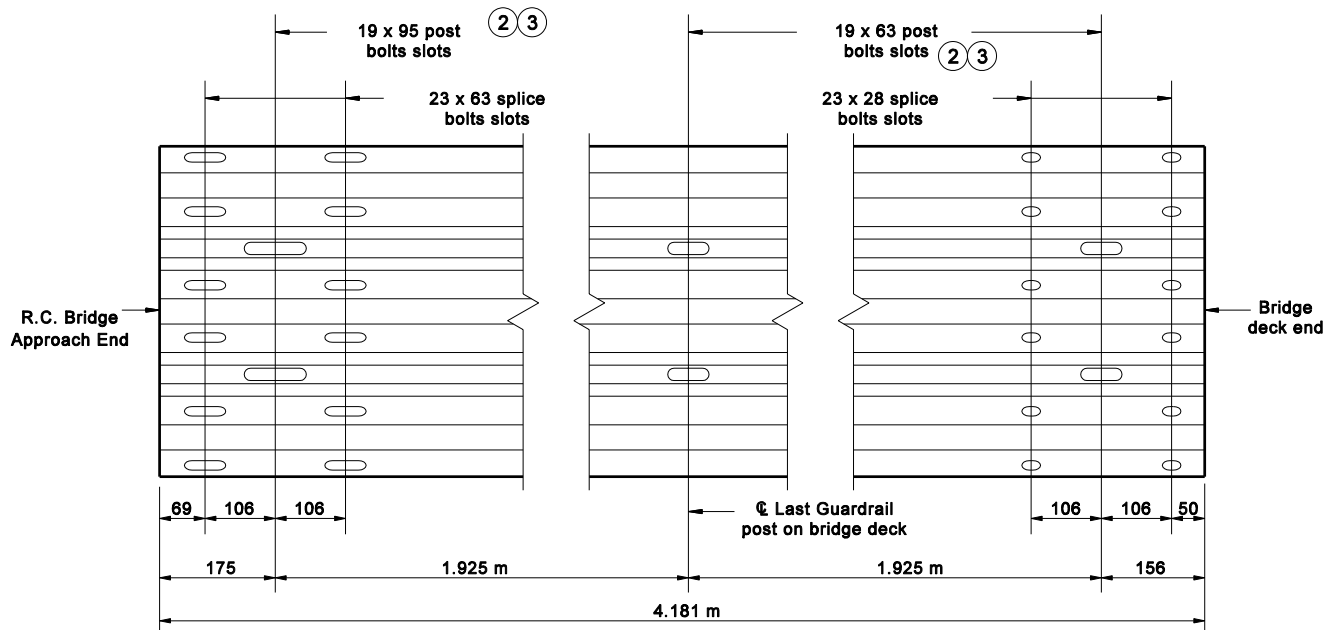


THRIE BEAM ELEVATION



THRIE BEAM EXPANSION ELEMENT ELEVATION

NOTE:

1. All thrie beam bridge railing elements are 3.43.
2. Hand tighten the post bolts on thrie beam expansion elements and burr the bolt threads.
3. Expansion allowed = ± 22 ; therefore, the maximum length of bridge which this accomodates is 49 m for steel or 58 m for concrete.

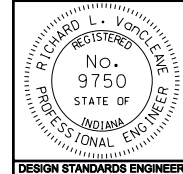
All dimension are in mm unless otherwise specified

INDIANA DEPARTMENT OF TRANSPORTATION

**RETROFIT THRIE BEAM
BRIDGE RAILING COMPONENTS**

SEPTEMBER 2006

STANDARD DRAWING NO. 706-TBRE-01



/s/ Richard L. VanCleave 9-01-06
DESIGN STANDARDS ENGINEER DATE

/s/ Richard K. Smutzer 9-01-06
CHIEF HIGHWAY ENGINEER DATE

DESIGN STANDARDS ENGINEER