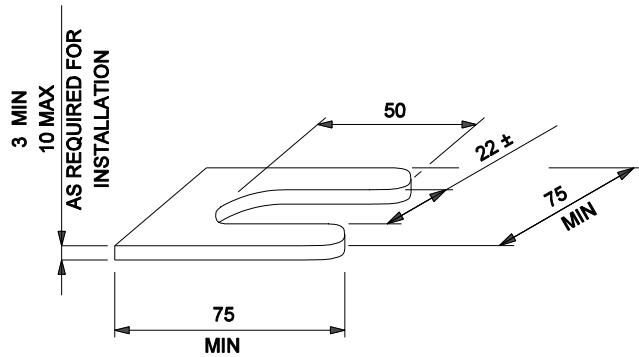
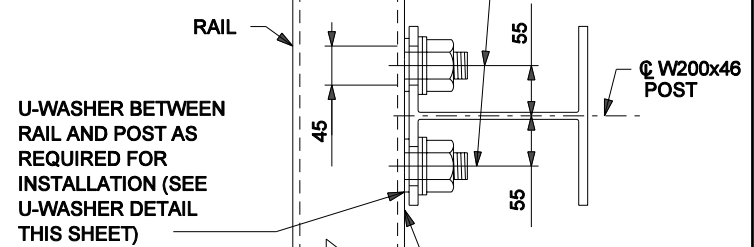


ANCHOR BAR DETAIL



U-WASHER DETAIL

\bar{C} 32x45 SLOTTED HOLE
IN W200 FLANGE FOR 19 x 60
LG STUD W/HEX NUT, HARDENED
CLIPPED WASHER AND LOCK WASHER



SEAL TOP AND SIDES
OF RAIL-TO-POST
CONNECTION WITH
CAULKING COMPOUND
AFTER INSTALLATION

RAIL TO POST DETAIL

NOTES:

1. U-WASHER PROVIDED TO ADJUST FOR "FIT" PROBLEMS IN THE FIELD.
2. TIGHTEN POST-RAIL CONNECTIONS TO SNUG TIGHT CONDITION ONLY.
3. PROVIDE ONE U-WASHER PER STUD AS REQUIRED.

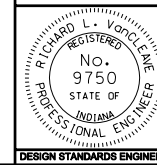
All dimensions are in mm unless otherwise specified

INDIANA DEPARTMENT OF TRANSPORTATION

**CONCRETE BRIDGE
RAILING TYPE TF-2**

SEPTEMBER 2005

STANDARD DRAWING NO. 706-BRTF-10



/s/ Richard L. VanCleave 9-01-05
DESIGN STANDARDS ENGINEER DATE

/s/ Richard K. Smutzer 9-01-05
CHIEF HIGHWAY ENGINEER DATE