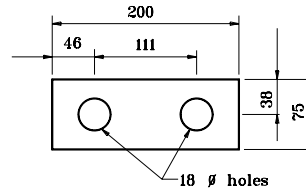


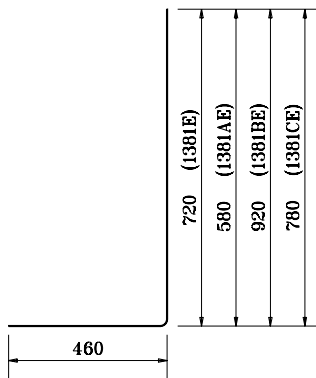
**BASE PLATE DETAIL**



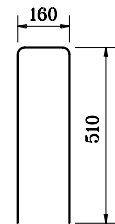
**BEARING PLATE DETAIL**

**NOTES:**

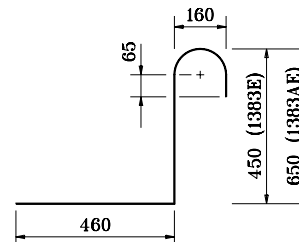
1. See Standard Drawing 703-BRST-01 for standard 180° bar bending details.
2. All reinforcing bars designated "E" shall be epoxy coated.



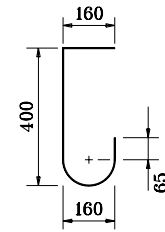
- 1381E x 1180
- 1381AE x 1040
- 1381BE x 1380
- 1381CE x 1240



1382E x 1180



1383E x 1160  
1383AE x 1360



1384E x 800

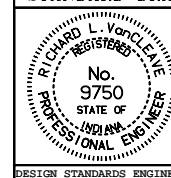
All dimensions are in mm unless otherwise specified.

INDIANA DEPARTMENT OF TRANSPORTATION

**RAILING, PF & PS**

**DETAILS**  
MARCH 2002

STANDARD DRAWING NO. **706-BRPP-06**



/s/ Richard L. VanCleave 3-01-02  
DESIGN STANDARDS ENGINEER DATE

/s/ Richard K. Smutzer 3-01-02  
CHIEF HIGHWAY ENGINEER DATE

DESIGN STANDARDS ENGINEER