

TYPICAL SECTION P-P

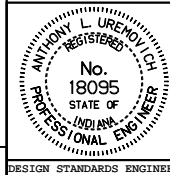
All dimensions are in mm unless otherwise specified.

INDIANA DEPARTMENT OF TRANSPORTATION

**FLARED WINGS
TYPICAL CROSS SECTION**

SEPTEMBER 1994

STANDARD DRAWING NO. **211-BFIL-02**



/s/ Anthony L. Uremovich 9-30-94
DESIGN STANDARDS ENGINEER DATE

/s/ Donald W. Lucas 9-30-94
CHIEF HIGHWAY ENGINEER DATE

Source Sheet: **S-1**

DESIGN STANDARDS ENGINEER