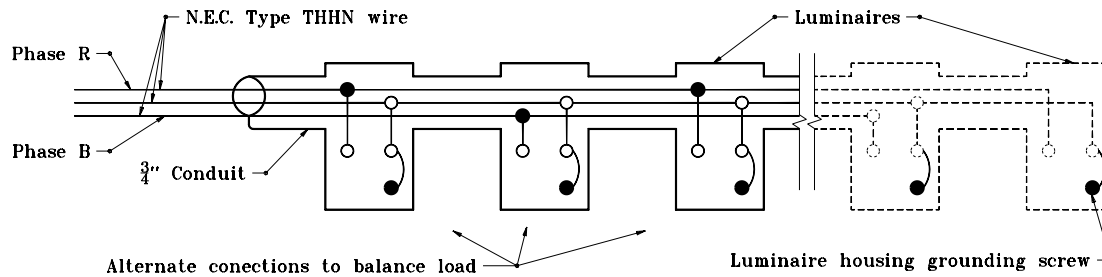
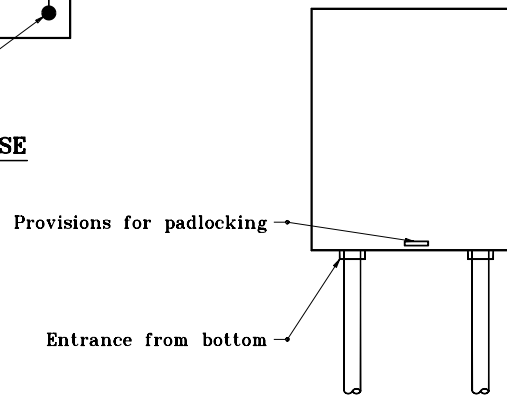


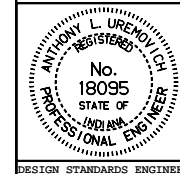
FOR CONNECTION TO 240 V PHASE TO PHASE



FOR CONNECTION TO 120 V OR 240 V PHASE TO NEUTRAL

INDIANA DEPARTMENT OF TRANSPORTATION
UNDERPASS LIGHTING DETAILS
LUMINAIRE WIRING DETAIL
 JANUARY 2000

STANDARD DRAWING NO. **E 807-LTUP-05**



/s/ Anthony L. Uremovich 1-03-00
 DESIGN STANDARDS ENGINEER DATE

/s/ Firooz Zandi 1-03-00
 CHIEF HIGHWAY ENGINEER DATE

DESIGN STANDARDS ENGINEER