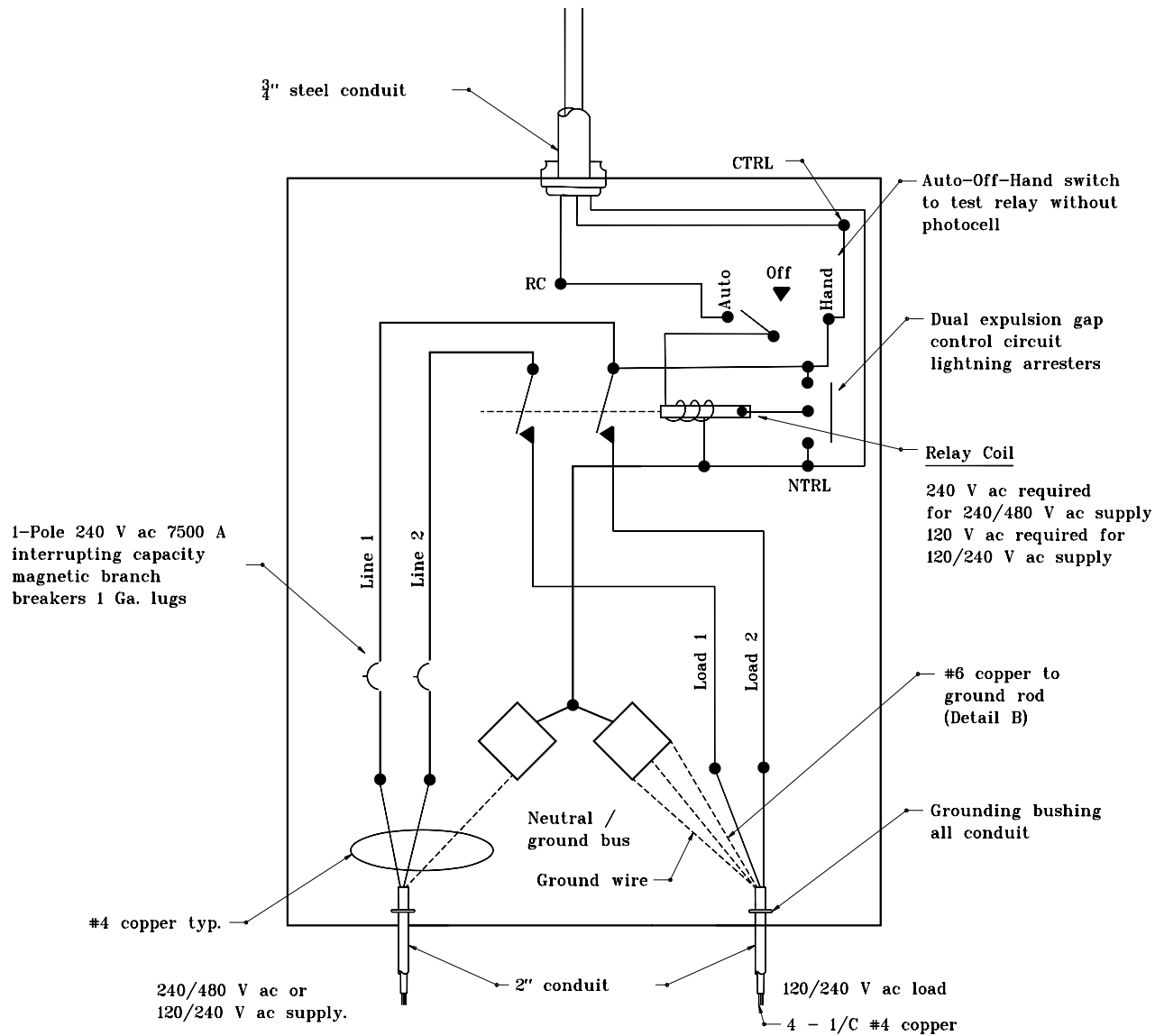


GENERAL NOTES

To Photo Control:
 240 V ac required for 240/480 V ac supply.
 120 V ac required for 120/240 V ac supply.



**TYPICAL CABINET WIRING,
 TYPE 1**

INDIANA DEPARTMENT OF TRANSPORTATION	
LIGHT SERVICE POINT DETAILS	
JANUARY 2000	
STANDARD DRAWING NO. E 807-LTSP-03	
	/s/ Anthony L. Uremovich 1-03-00 <small>DESIGN STANDARDS ENGINEER DATE</small>
	/s/ Firooz Zandi 1-03-00 <small>CHIEF HIGHWAY ENGINEER DATE</small>
<small>DESIGN STANDARDS ENGINEER</small>	