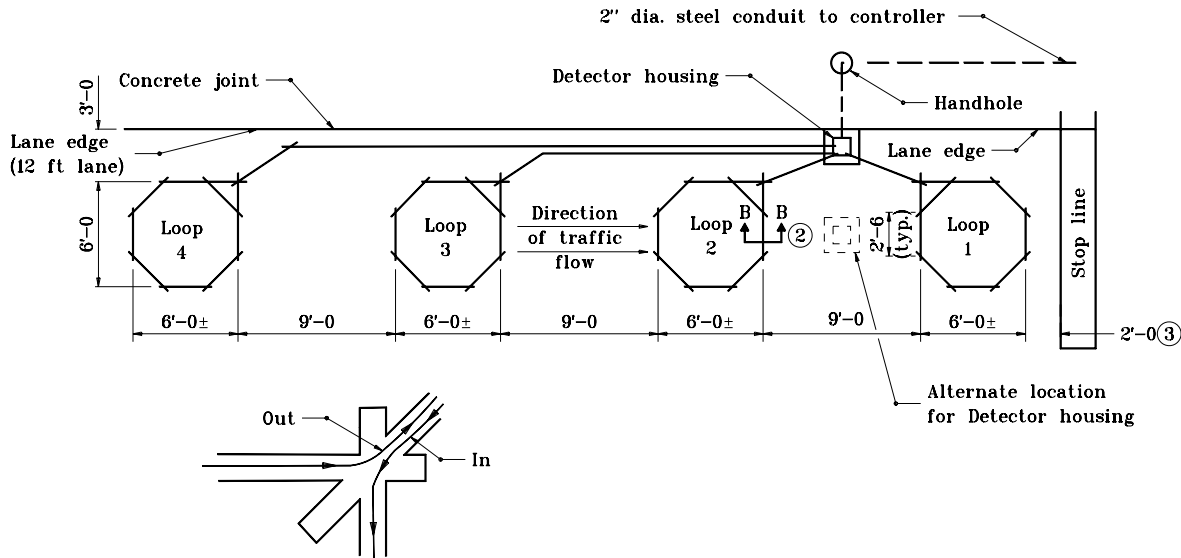
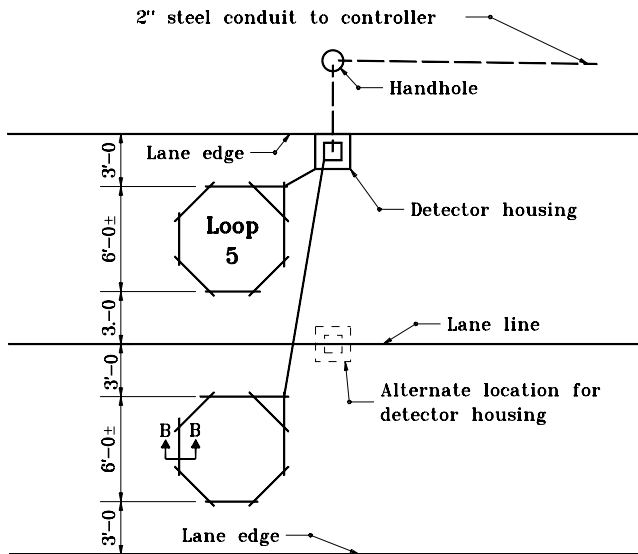


**TYPICAL LOOP DETECTION SAW-CUT PLAN (ONE LANE)**



**TYPICAL LOOP DETECTION (TWO LANES)**



**GENERAL NOTES**

1. Loop saw-cuts as shown on plan sheets are to be considered as schematic only. In the event of discrepancies, this detail shall govern.
- ② See Standard Drawing E 805-SGLI-02 for Section B-B.
- ③ This distance is typical depending on the intersection geometrics; a loop can be sawed in front of the stop line.

INDIANA DEPARTMENT OF TRANSPORTATION	
<b>TRAFFIC SIGNAL LOOP INSTALLATION</b>	
MAY 1998	
<b>STANDARD DRAWING NO. E 805-SGLI-01</b>	
	DETAILS PLACED IN THIS FORMAT 11-15-99
/s/ Anthony L. Uremovich 11-15-99 DESIGN STANDARDS ENGINEER DATE	/s/ Firooz Zandi 11-15-99 CHIEF HIGHWAY ENGINEER DATE
DESIGN STANDARDS ENGINEER	ORIGINALLY APPROVED 5-01-98