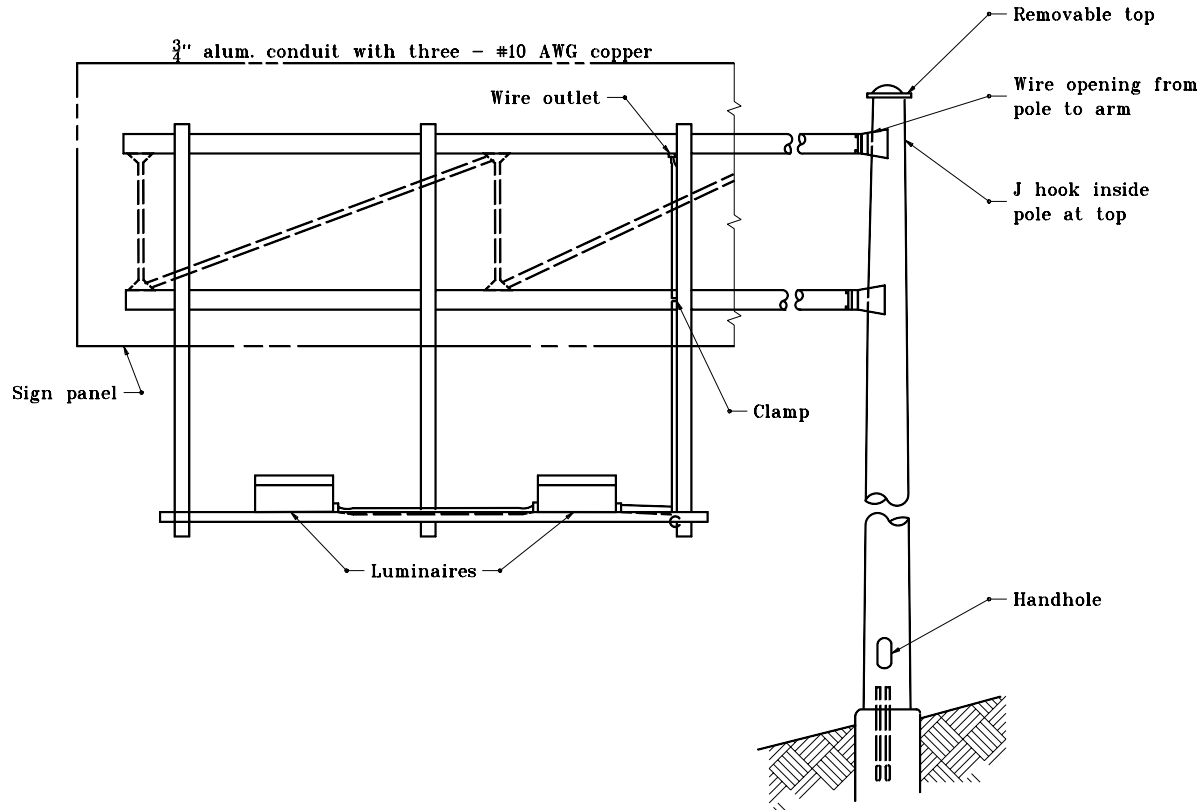


**GENERAL NOTES**

1. The minimum number of brackets required shall be one more than the number of fixtures installed.



**CANTILEVER  
(Double Mastarm)**

INDIANA DEPARTMENT OF TRANSPORTATION	
CANTILEVER SIGN STRUCTURE	
SEPTEMBER 2001	
STANDARD DRAWING NO. E 802-SNIL-04	
	/s/ Anthony L. Uremovich 9-04-01 DESIGN STANDARDS ENGINEER DATE
	/s/ Firooz Zandi 9-04-01 CHIEF HIGHWAY ENGINEER DATE
DESIGN STANDARDS ENGINEER	