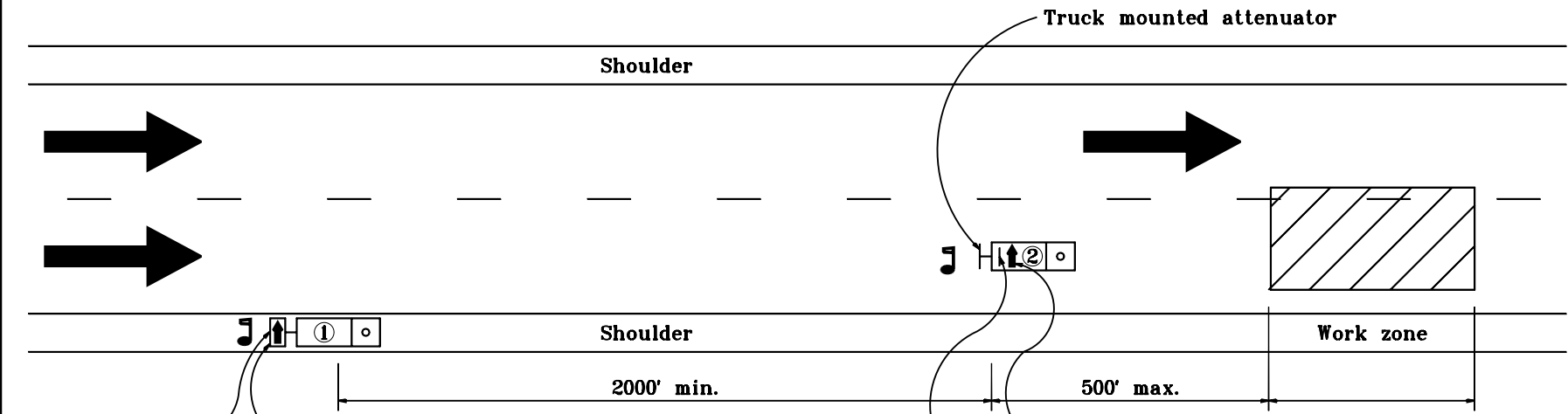


MULTI-LANE DIVIDED HIGHWAY



Truck mounted flashing arrow sign

RIGHT LANE CLOSED AHEAD
 XW20-5
 (R or L)
 mounted to bottom of flashing arrow sign

LEGEND

- Flagger**
- Truck which may be a pick-up**
- Truck which shall be 24,000 lb or greater gross vehicular weight**

2'-6" x 4'-0"
 Roof mounted flashing arrow sign

XWA-2
 (R or L)
 Mounted on rear of truck

LONGITUDINAL BUFFER LENGTH SHOWN ON STANDARD DRAWING E 801-TCFO-01

Posted Speed Limit, mph	Length, ft
30 or lower	80
35	115
40	180
45	230
50	280
55	350
60	410
65	500

GENERAL NOTES

1. Flagger shall be used while trucks are stopped.
2. Strobe lights will be required on all vehicles.
3. Distances shown are approximate and may be adjusted as directed.
4. Truck mounted attenuator shall be designed to attenuate impacts by a pickup truck of 2000 kg gross vehicular mass st km/h.

INDIANA DEPARTMENT OF TRANSPORTATION
MAINTENANCE OF TRAFFIC FOR REFLECTOR REPLACEMENT
 MAY 2000
 STANDARD DRAWING NO. E 801-TCFO-03

	/s/ Anthony L. Uremovich 5-01-00 <small>DESIGN STANDARDS ENGINEER DATE</small>
	/s/ Firooz Zandi 5-01-00 <small>CHIEF HIGHWAY ENGINEER DATE</small>

DESIGN STANDARDS ENGINEER