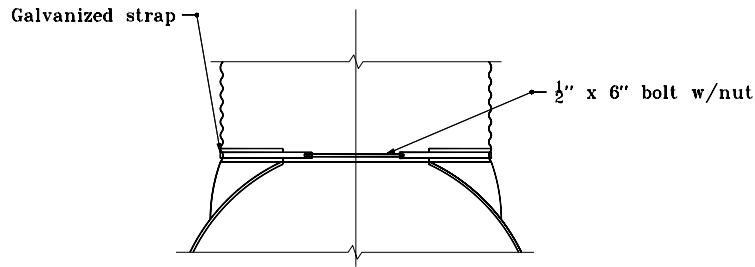
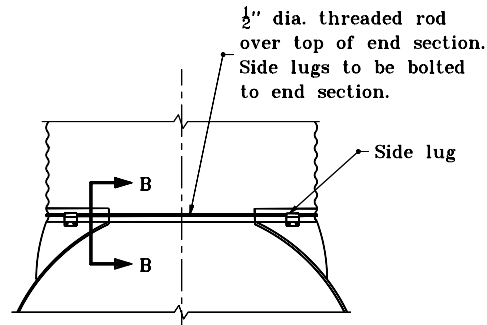


GENERAL NOTES

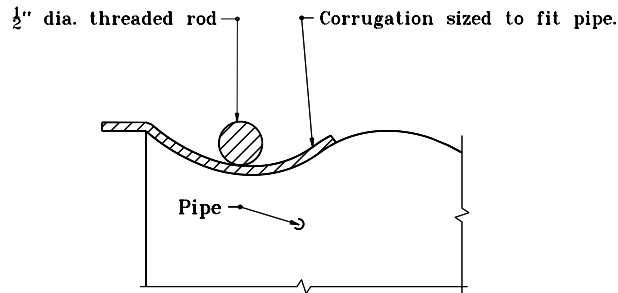
1. For circular pipe diameters through 24", attach end section to pipe with type 1 connector. For all other sizes, attach end section to pipe with type 2 connector.



TYPE 1 CONNECTOR DETAIL
Through 24" dia.



TYPE 2 CONNECTOR DETAIL
For all circular pipes larger than 24"
and all pipe-arches



SECTION B-B

INDIANA DEPARTMENT OF TRANSPORTATION	
SAFETY METAL CULVERT END SECTIONS FOR CORRUGATED PIPE	
JANUARY 1998	
STANDARD DRAWING NO. E 715-SMES-03	
DETAILS PLACED IN THIS FORMAT	7-27-99
	/s/ Anthony L. Uremovich 7-27-99 DESIGN STANDARDS ENGINEER DATE
	/s/ Firooz Zandi 7-27-99 CHIEF HIGHWAY ENGINEER DATE
DESIGN STANDARDS ENGINEER	ORIGINALLY APPROVED 1-02-98