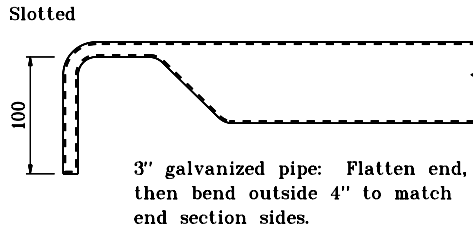
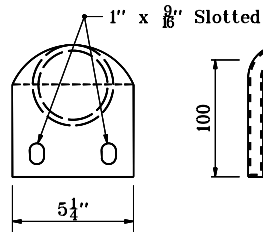
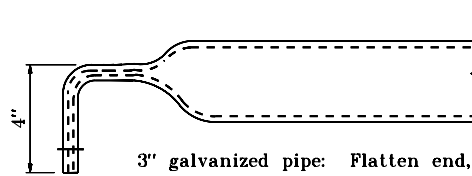
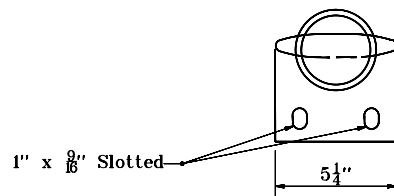


**LONGITUDINAL SAFETY BAR DETAIL**



3" galvanized pipe: Flatten end, then bend outside 4" to match end section sides.

OR

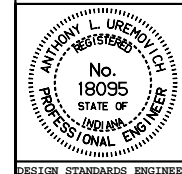


3" galvanized pipe: Flatten end, then bend outside 4" to match end section sides.

**TRANSVERSE SAFETY BAR DETAILS**

INDIANA DEPARTMENT OF TRANSPORTATION  
**SAFETY METAL CULVERT END  
 SECTIONS FOR CORRUGATED PIPE**  
 JANUARY 1998

STANDARD DRAWING NO. **E 715-SMES-02**



DETAILS PLACED IN THIS FORMAT 7-27-99

/s/ Anthony L. Uremovich 7-27-99  
 DESIGN STANDARDS ENGINEER DATE

/s/ Firooz Zandi 7-27-99  
 CHIEF HIGHWAY ENGINEER DATE

DESIGN STANDARDS ENGINEER

ORIGINALLY APPROVED 1-02-98