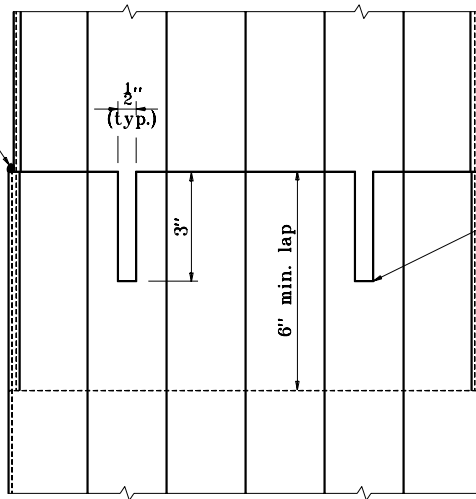
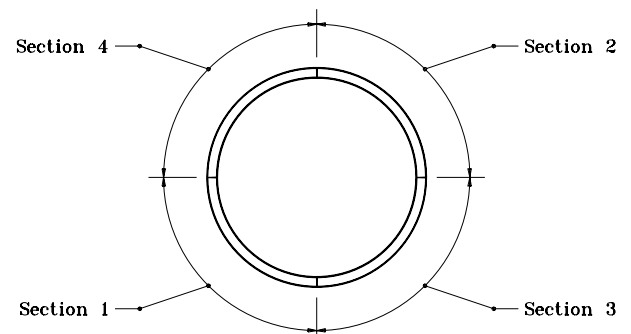


Continuous weld



FOR FLUTED SHELLS

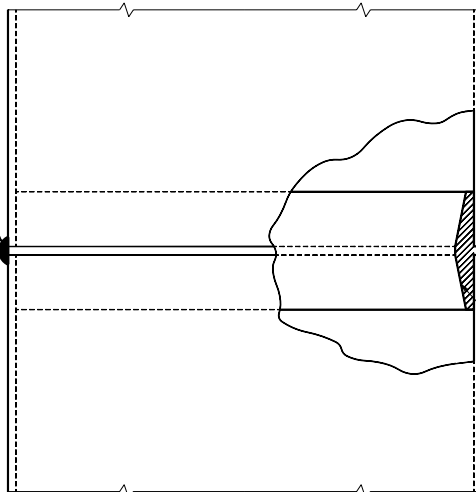
Burn four equally spaced slots in lower section before inserting extension



Completion of Sections 1, 2, 3 & 4 constitutes one pass.

WELDING SEQUENCE

Continuous weld



FOR ROUNDED PIPE

Continuous weld

Electric type wedge split chill ring for line welding

INDIANA DEPARTMENT OF TRANSPORTATION	
SPLICING PILE SHELLS IN FIELD	
SEPTEMBER 1994	
STANDARD DRAWING NO. E 701-BPIL-04	
DETAILS PLACED IN THIS FORMAT 11-15-99	
	/s/ Anthony L. Uremovich 11-15-99 DESIGN STANDARDS ENGINEER DATE
	/s/ Firooz Zandi 11-15-99 CHIEF HIGHWAY ENGINEER DATE
DESIGN STANDARDS ENGINEER	ORIGINALLY APPROVED 9-30-94