

GENERAL NOTES

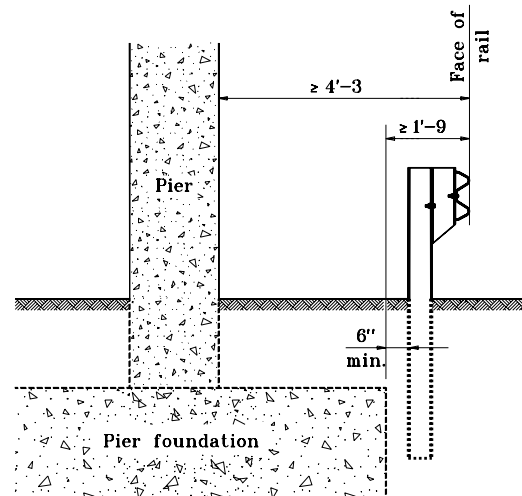
1. This drawing shall be used where W-beam guardrail is specified along the outside shoulder of a multi-lane divided roadway to shield the piers of overhead structures.
2. The details on this drawing are typical guardrail layouts for shielding the piers of single or tandem overhead structures. The required length of guardrail shall be determined in accordance with Tables RPPG-1 and RPPG-2, and shall be as shown on the plans.
3. Dimensions and details not shown on this drawing shall be as shown on the plans.

TABLE RPPG-1

Outside (Right Side) Shoulder Pier Approach Guardrail Lengths at Piers/Frame Bents ≤ 16' from Pavement Edge			
Design Speed (mph)	Pier End Inside Clear Zone	Pier End Outside Clear Zone	Guardrail Pay Length (ft.)
	Required Minimum Length (ft.) in Advance of the Pier/Frame Bent End		
≥ 50	>of the rounded calculated length of need or 100'	100'	Required minimum length
<50	>of the rounded calculated length of need or 50'	50'	minus 25' for GP transition

TABLE RPPG-2

Outside (Right Side) Shoulder Pier Approach Guardrail Lengths at Piers/Frame Bents > 16' from Pavement Edge			
Design Speed (mph)	Pier End Inside Clear Zone	Pier End Outside Clear Zone	Guardrail Pay Length (ft.)
	Required Minimum Length (ft.) in Advance of the Pier/Frame Bent End		
≥ 50	>of the rounded calculated length of need or 100'	100'	Required minimum length
< 50	>of the rounded calculated length of need or 50'	50'	plus length to shield pier face



Guardrail to Pier Clearance

INDIANA DEPARTMENT OF TRANSPORTATION	
ROADSIDE PIER PROTECTION GUARDRAIL	
SEPTEMBER 1997	
STANDARD DRAWING NO. E 601-RPPG-03	
	DETAILS PLACED IN THIS FORMAT 11-15-99 /s/ Anthony L. Uremovich 9-03-99 DESIGN STANDARDS ENGINEER DATE
DESIGN STANDARDS ENGINEER	/s/ Do Ritzbeiz W. Zabotnik 9-03-99 CHIEF HIGHWAY ENGINEER DATE ORIGINALLY APPROVED 9-01-97