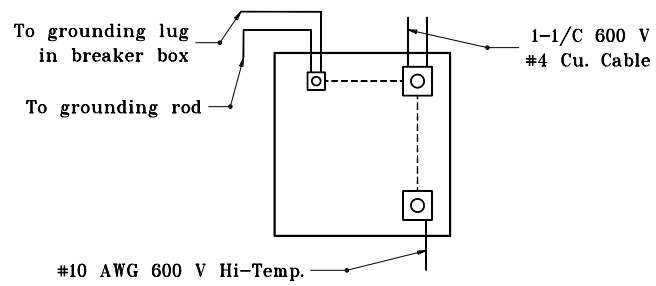


BREAKER PANEL



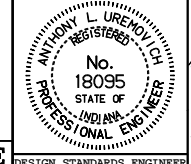
NEUTRAL GROUNDING LUG DETAIL

GENERAL NOTES

1. For all luminaire wiring from breaker panel, the last luminaire shall be #10 AWG stranded copper, 600 V.
2. Where sign illumination and underpass illumination are to be installed on the same structure, both sign and underpass luminaires may be connected to the same circuit.

All dimensions are in mm unless otherwise specified.
 INDIANA DEPARTMENT OF TRANSPORTATION
UNDERPASS LIGHTING DETAILS
CIRCUIT BREAKER WIRING DETAIL
 MARCH 1995

STANDARD DRAWING NO. **807-LTUP-06**



/s/ Anthony L. Uremovich 3-01-95
 DESIGN STANDARDS ENGINEER DATE

/s/ Donald W. Lucas 3-01-95
 CHIEF HIGHWAY ENGINEER DATE

Source Sheet: **MT6E**